

UP TO  
**40% off**  
Everything!

INCLUDING  
**NEW FALL**  
ARRIVALS!

**ellos**<sup>®</sup>  
FALL FOR *fashion*

MODERN SWEDISH FASHION, SIZES 10-44

Tunic  
Page 2



1.800.405.3650  
[www.ellos.us](http://www.ellos.us)



**SAVE \$20**  
WHEN YOU OPEN AND  
USE A FULLBEAUTY  
PLATINUM CREDIT CARD<sup>1&2</sup>  
SEE ORDER FORM FOR DETAILS.  
APPLY AT [ELLOS.US/CREDIT-CARD](http://ELLOS.US/CREDIT-CARD)

UP TO  
**40% off**  
Everything!

**ellos**<sup>®</sup>  
FALL FOR *fashion*

MODERN SWEDISH FASHION, SIZES 10-44

Tunic  
Page 2

**EXTRA**  
**20% off**  
YOUR HIGHEST PRICED ITEM WITH  
PURCHASE OF 2+ ITEMS  
USE CODE: **ELCQP20**  
See back cover  
for details

**INCLUDING**  
**NEW FALL**  
**ARRIVALS!**



**SAVE \$20**  
WHEN YOU OPEN AND  
USE A FULLBEAUTY  
PLATINUM CREDIT CARD<sup>1&2</sup>  
SEE ORDER FORM FOR DETAILS.  
APPLY AT [ELLOS.US/CREDIT-CARD](http://ELLOS.US/CREDIT-CARD)

1.800.405.3650  
[www.ellos.us](http://www.ellos.us)

UP TO  
**40%** off  
Everything!

INCLUDING  
**NEW FALL**  
ARRIVALS!



"It's nice to have clothes  
that make you feel sexy.  
Thank you!"

— FAN OF ELLOS

A. KNOT FRONT  
3/4 SLEEVE TUNIC  
2507-37483-0645  
Rayon/Spandex Jersey.  
10/12-42/44  
Solid: ~~\$56.90~~ **\$29.90\***  
Print: ~~\$62.90~~ **\$34.90\***

Machine washable, imported.  
\*Red prices reflect discount.

A.  
BLACK  
NEUTRAL  
FLORAL

shaped to  
**FLATTER**  
It's all about the knot.  
FROM **29<sup>90</sup>**



A.  
BLACK

up  
to size  
42/44!



A.  
**NEW!**  
BLACK  
ABSTRACT  
DOT

New Print!

Pant  
← Pg. 6

**The Ellos experience**

**Knot Front Tunic**  
Give your style a boost with  
a tunic that defines your shape.  
It's pretty amazing!



NAVY FLORAL PRINT | RICH RED | BLACK ZEBRA PRINT | SMOKY PURPLE FLORAL | **NEW!** BLACK ABSTRACT DOT | DEEP EMERALD | BLACK BROWN SUGAR GEO | TWILIGHT BLUE | BLACK MULTI FLORAL | BLACK WHITE PRINT | BLACK NEUTRAL FLORAL

BLACK MULTI GREEN FLORAL

NEW LIGHT CORAL FLORAL

BRIGHT COBALT WHITE DITSY

FROM **34<sup>90</sup>**



New Print!



New Print!



A. TIE NECK PEASANT TUNIC  
2530-37515-0645  
Woven Rayon.  
10/12-42/44  
Solid: ~~\$62.90~~ **\$34.90\***  
Print: ~~\$67.90~~ **\$39.90\***

A. NEW!  
BLACK MULTI DITSY FLORAL

keyhole with double ties

up to size 42/44!

Jeans Pg. 10

# cool PRAIRIE

Sweet details like tie necklines, feminine sleeves and ditsy florals.

## FROM **34<sup>90</sup>**

B.

STONE

NEW! WOOD ROSE PINK

NEW! DESERT SAGE

C.

BLACK DENIM

STONEWASH

New Color!

New Color!

B. NEW!  
DESERT SAGE  
C. STONEWASH

textured knit!

5-Pocket Bootcut

back pocket embroidery

D. NEW!  
BLACK MULTI DITSY FLORAL

SAVE **\$30**

blouson sleeves



New Print!

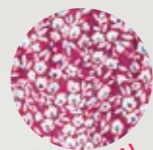


B. KEYHOLE TIERED TEXTURED KNIT TUNIC  
2549-37538-0645  
Cotton/Polyester/Spandex Denim.  
10-34  
Polyester/Spandex Knit Crepe. USA.  
10/12-34/36  
~~\$84.90~~ **\$49.90\***  
\*Red prices reflect discount.  
All machine washable, imported.

C. 5-POCKET BOOTCUT JEANS  
2549-37538-0645  
Cotton/Polyester/Spandex Denim.  
10-34  
~~\$73.90~~ **\$44.90\***  
D. SMOCKED WAIST MIDDRESS  
2505-16728-0645  
Polyester Georgette.  
10-34  
~~\$85.90~~ **\$55.90\***



A. NEW! BLACK DITSY FLORAL



New Print!

A. NEW! BLACK DITSY FLORAL

# feminine DETAILS

Florals, ruffles and tiers team up for a timeless, feminine look.

FROM **36<sup>90</sup>**

B. NEW! SWEET LILAC FLORAL  
C. BLACK



RASPBERRY SORBET BURNT OLIVE

A. TIERED SURPLICE MIDI DRESS

2505-39236-0645  
Rayon Crinkle Crepe.  
10-28 ~~\$85.90~~ \$49.90\*

B. NEW! RUFFLE FRONT BLOUSE SLEEVE BLOUSE

2530-06613-0645  
Polyester Georgette.  
10/12-34/36  
~~\$69.90~~ \$44.90\*

C. WIDE LEG KNIT PANTS

2525-24827-0645  
Polyester/Elastane Jersey.  
10/12-38/40  
~~\$67.90~~ \$44.90\*

D. NEW! TEXTURED KNIT RUFFLE NOTCH NECK TOP

2507-06570-0645  
Polyester/Spandex.  
10/12-34/36  
~~\$59.90~~ \$36.90\*

E. NEW! V-NECK TIERED MIDI DRESS

2505-06622-0645  
Polyester Georgette.  
10/12-34/36  
~~\$84.90~~ \$54.90\*

All machine washable, imported.  
\*Red prices reflect discount.

UP TO **40% off** Everything!



SWEET LILAC FLORAL

SAVE **\$30**

blouson sleeves



A. FRENCH BLUE DITSY FLORAL NEW! ROYAL GREEN DITSY FLORAL BERRY RED DITSY FLORAL



B. SWEET LILAC FLORAL



C. BLACK elastic waist



A.



GREEN VINE PRINT

A. **NEW!**  
GREEN  
VINE  
PRINT



B.



GREEN MULTI  
FLORAL

B. **NEW!**  
GREEN  
MULTI  
FLORAL



# 5 star DRESSES

One-and-done silhouettes in  
feel-good fabrics, flattering fits,  
and eye-catching prints.

C. **NEW!** TEXTURED KNIT  
EMPIRE DRESS

2505-06617-0645

Polyester/Spandex.

10/12-34/36 ~~\$84.90~~ \$49.90\*

D. KNIT MIDI DRESS WITH SURPLICE  
NECKLINE & WAIST TIE 2505-39237-0645

Polyester/Spandex.

10/12-34/36 ~~\$89.90~~ \$54.90\*

\*Red prices reflect discount.

Dresses  
FROM  
49<sup>90</sup>

C.

MIDNIGHT  
GREEN



DUSTY BLUE



C. **NEW!**  
MIDNIGHT  
GREEN

full  
flutter  
sleeves  
↓



Split flutter  
sleeve

SAVE  
\$35

tie in  
front  
or back



PALE OLIVE  
DITSY FLORAL



D.  
PALE  
OLIVE  
DITSY  
FLORAL

A. **NEW!** BUTTON FRONT KNIT  
MIDI SHIRTDRESS

2505-06626-0645

Polyester/Spandex.

10/12-34/36 ~~\$84.90~~ \$54.90\*

B. **NEW!** SATIN KEYHOLE EMPIRE  
MIDI DRESS

2505-06627-0645

Polyester Satin.

10-34 ~~\$84.90~~ \$54.90\*

All machine washable, imported.



AQUA MULTI PRINT

LIGHT STRAWBERRY

DESERT SAGE

TROPICAL AQUA



A. NEW! RASPBERRY SORBET

New Color!



A. WHITE  
B. MEDIUM STONEWASH



B. MEDIUM STONEWASH  
NEW! BLACK WASH  
NEW! DARK STONEWASH



# noteworthy KNITS

Knits tops with elegant details are so much more than comfortable.

FROM **39<sup>90</sup>**



soft crepe-knit texture

New Colors!

Sandal Pj. 38 →

A. KNIT TOP WITH RUFFLED V-NECK  
2507-45762-0645  
Polyester/ Spandex Crepe.  
10/12-34/36 ~~\$79.90~~ \$49.90\*

B. 5-POCKET WIDE LEG JEANS 2549-45846-0645  
Cotton/Polyester/Spandex Denim.  
10-34 ~~\$79.90~~ \$49.90\*

C. PUFF SLEEVE KNIT TEE 2507-20254-0645  
Polyester/ Spandex Knit Crepe.  
10/12-34/36 ~~\$69.90~~ \$42.90\*

D. NEW! TEXTURED KNIT INVERTED PLEAT TOP 2507-06571-0645  
Polyester/Spandex.  
10/12-34/36 ~~\$64.90~~ \$39.90\*

E. KNIT BOOTCUT PANTS WITH POCKETS 2525-42723-0645  
Polyester./Spandex Stretch Crepe.  
10-38 ~~\$64.90~~ \$42.90\*

F. INVERTED PLEAT BLOUSON SLEEVE TUNIC 2507-45894-0645  
Polyester/ Spandex Crepe.  
10/12-34/36 ~~\$79.90~~ \$49.90\*

G. FAUX LEATHER FRONT PONTE LEGGINGS 2525-38895-0645  
Ponte/ Rayon/Nylon/Spandex.  
10-34 ~~\$73.90~~ \$43.90\*

\*Red prices reflect discount.

All machine washable, imported.



C. VINTAGE PURPLE

B. NEW! BLACK

New Color!



C. VINTAGE PURPLE  
NEW! GREY SPRUCE

UP TO **40% off** Everything!



D. MIDNIGHT GREEN  
CHERRY RED



D. NEW! CHERRY RED  
E. BLACK

flutter sleeves

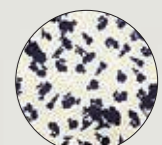
FROM **39<sup>90</sup>**



E. BLACK



F. BLUE SHADOW DITSY FLORAL  
G. BLACK



New Print!



New Print!



F. NEW! BLACK MULTI PRINT  
NEW! IVORY BLACK DITSY



G. BLACK  
Back Ponte Leggings



B. BLACK  
A. PINK FROST FLORAL

SAVE UP TO \$100

A. PINK FROST FLORAL  
C. SILVER METALLIC

A. TIE-FRONT MAXI DRESS  
2505-22157-0645  
Rayon Crepe.  
10-34 \$107.90 \$59.90\*

B. ZIP FRONT LEATHER JACKET  
2502-13513-0645  
Leather. Professional Leather Clean.  
10-34 \$337.90 \$237.90\*

C. SLINGBACK FLATS  
2536-09688-0645  
Faux Leather. Spot Clean.  
Full & half sizes 7-11, 12. M, W, WW.  
\$62.90 \$36.90\*

D. NEW! SURPLICE TIE WAIST MAXI DRESS  
2505-06629-0645  
Polyester/Spandex.  
10/12-34/36 \$89.90 \$59.90\*

Smocked back detail

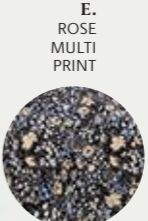
← available in W and WW widths!

D. NEW! PINK BLOOM FLORAL

E. BLACK  
BLACK TROPICAL PRINT  
NEW! BLACK BLUE DITSY  
NAVY RED PRINT  
ROSE MULTI PRINT  
BLACK/IVORY FLORAL



Back tie



New Print!

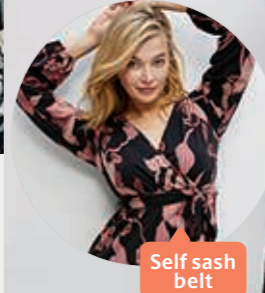
E. KNIT TIE-BACK MAXI  
2505-05970-0645  
Polyester/Spandex.  
10/12-38/40  
\$89.90 \$59.90\*

F. SURPLICE MIDDRESS WITH SELF TIE  
2505-44523-0645  
Polyester/Spandex Jersey.  
10/12-34/36  
\$94.90 \$59.90\*

All apparel is machine washable, imported.  
\*Red prices reflect discount.

up to size 38/40!

NOW \$59.90



Self sash belt

fine PRINTS  
Dresses with flattering fits, comfortable silhouettes and prints that WOW!

F. BLACK BERRY FLORAL

A. BLACK WHITE FLORAL WHITE RED PRINT PINK FROST FLORAL NAVY/ WHITE DOT



B. BLACK  
D. PINK BLOOM FLORAL



C. BLACK SILVER METALLIC

UP TO 40% off Everything!

F. BLACK BERRY FLORAL



UP TO  
**40% off**  
Everything!

bestselling  
**KNIT FITS**

Dresses that flow so effortlessly, they flatter every body.  
**FROM 32<sup>90</sup>**

**A. FIT AND FLARE KNIT DRESS** 2505-24702-0645  
Polyester/Spandex.  
10/12-38/40 ~~\$51.90~~ **\$32.90\***

**B. BOXY CARDIGAN** 2556-12555-0645  
Rayon/Polyester.  
10/12-38/40 ~~\$67.90~~ **\$39.90\***

All machine washable, imported.  
*\*Red prices reflect discount.*



up to size 38/40!



New Color!



SAVE  
**\$30**

up to size 38/40!

Swede Bootie Pg. 38

**C. MADISON A-LINE KNIT DRESS** 2505-38199-0645  
Polyester/Spandex.  
10/12-38/40 ~~\$73.90~~ **\$45.90\***

**D. KNIT TRAPEZE DRESS** 2505-17184-0645  
Cotton/Rayon/Spandex Jersey.  
10/12-34/36 ~~\$56.90~~ **\$36.90\***



NOW  
**36<sup>90</sup>**



D. EVENING BLUE



A.  
BLACK  
IVORY  
FLORAL



detachable  
knit slip

UP TO  
**40% off**  
Everything!

*falling for*  
**NEUTRALS**  
Pick up the autumn vibe  
with this chic color palette.

**FROM**  
**\$26<sup>90</sup>**



A. BLACK/IVORY  
FLORAL  
B. BLACK/GEOMETRIC  
PRINT  
C. ANTIQUE BLUSH  
FLORAL



B. SAND  
HEATHER  
A. PALE  
BLUSH

**A. SHEER OVERLAY  
TIERED DRESS**  
2505-33078-0645  
Polyester Georgette.  
10/12-34/36 **\$84.90 \$54.90\***

**B. RELAXED CARDIGAN  
WITH POCKETS**  
2556-33073-0645  
Acrylic/Nylon/  
Wool/Spandex.  
10/12-34/36 **\$84.90 \$54.90\***

All machine washable,  
imported.  
*\*Red prices reflect  
discount.*



a cardigan  
adds instant  
polish

B.  
SAND  
HEATHER  
A.  
BLACK  
IVORY  
FLORAL

Tee  
**FROM**  
**26<sup>90</sup>**

up to size  
38/40!

up to  
size  
42/44!



C. WHITE  
D. BLACK/  
BEIGE  
FLORAL



New Print!



D. BLACK  
DARK OLIVE  
NAVY FLORAL PRINT  
BLACK GREY PRINT  
BLACK/BEIGE FLORAL  
BLACK/WHITE FLORAL

elastic  
back  
waist



E.  
SOFT  
CAMEL  
C. BLACK  
D. BLACK/  
BEIGE  
FLORAL

SAVE  
UP TO  
**\$60**

Tote  
Pg. 38

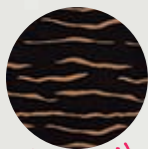


SOFT CAMEL

**C. MOCK NECK TEE**  
2507-37822-0645  
Rayon/Spandex Jersey.  
10/12-38/40  
Solid: **\$59.90 \$26.90\***  
Print: **\$45.90 \$31.90\***

**D. WIDE LEG SOFT  
PANTS**  
2549-39734-0645  
Woven Rayon.  
10/12-42/44  
Solid: **\$67.90 \$39.90\***  
Print: **\$73.90 \$44.90\***

**E. DOUBLE  
BREASTED BELTED  
TRENCH RAINCOAT**  
2520-16759-0645  
Cotton.  
10/12-34/36  
**\$169.90 \$109.90\***



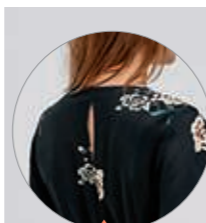
New Print!

- A. NEW! STONE
- B. WHITE

**A. NEW!**  
**RAWSTRING WAIST DRESS COAT**  
 2529-06623-0645  
 Polyester.  
 10-34  
~~\$169.90~~ **\$109.90\***

**B. MOCK NECK TEE**  
 2507-37822-0645  
 Rayon/Spandex Jersey.  
 10/12-38/40  
 Solid: ~~\$39.90~~ **\$26.90\***  
 Print: ~~\$45.90~~ **\$31.90\***

SAVE UP TO **\$60**



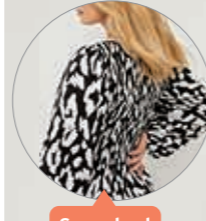
Keyhole back



BLACK FLORAL PRINT



C. BLACK FLORAL PRINT



Smocked bodice



BLACK IVORY PRINT



D. BLACK IVORY PRINT



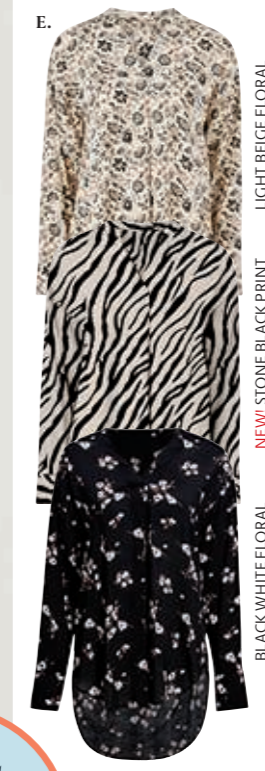
New Print!

- E. LIGHT BEIGE FLORAL

SAVE UP TO **\$30**



back pocket embroidery



up to size 38/40!

New Color!



**C. KEYHOLE-BACK BUTTON-FRONT SHIRTDRESS**  
 2505-24833-0645  
 Rayon Crepe.  
 10-34 ~~\$89.90~~ **\$49.90\***

**D. SMOCKED BODICE TIERED MIDI DRESS**  
 2505-45914-0645  
 Crinkle Rayon.  
 10/12-34/36  
~~\$89.90~~ **\$54.90\***

**E. NOTCH V-NECK TUNIC** 2530-09784-0645  
 Woven Rayon.  
 10-34 ~~\$73.90~~ **\$43.90\***

**F. 5-POCKET BOOTCUT JEANS**  
 2549-37538-0645  
 Cotton/Polyester/Spandex Denim.  
 10-34 ~~\$73.90~~ **\$44.90\***

**G. LONG BOYFRIEND CARDIGAN WITH TORTOISE BUTTONS**  
 2556-33075-0645  
 Acrylic/Nylon.  
 10/12-38/40  
~~\$79.90~~ **\$49.90\***

All machine washable, imported. \*Red prices reflect discount.

# looking LUXE

The rich feel of lustrous leather and luminous satin – things to look fallward to!



A. BEIGE GEO PRINT  
B. BLACK

C. WHITE BLACK STRIPE  
D. BLACK

C. WHITE BLACK STRIPE

D. BLACK

SAVE UP TO \$100

UP TO 40% off Everything!

SAVE UP TO \$110



BEIGE GEO PRINT



BLACK

Skinny Leather Pants

## The Ellos experience

### Leather & Satin

Two luxury looks easily combine into outfits that get noticed. Plus, their exceptional quality means you'll enjoy them for seasons to come.

- A. HI-LO BUTTON FRONT SATIN TUNIC**  
2530-17624-0645 Woven Polyester Satin.  
10-34 ~~\$69.90~~ \$49.90\*
- B. SKINNY LEATHER PANTS**  
2502-38524-0645 Leather. Professional Leather Clean.  
10-28 ~~\$315.90~~ \$205.90\*
- C. HI-LOW TUNIC**  
2530-24751-0645 Polyester Satin.  
10-34 ~~\$89.90~~ \$49.90\*
- D. FAUX LEATHER BUTTON FRONT TUNIC** 2507-33388-0645 Polyester Faux Leather.  
10-34 ~~\$100.90~~ \$65.90\*
- E. BACK ZIP LEATHER TOP**  
2502-01929-0645 Leather. Professional Leather Clean.  
10-28 ~~\$281.90~~ \$181.90\*
- F. ZIP FRONT LEATHER JACKET** 2502-13313-0645 Leather. Professional Leather Clean.  
10-34 ~~\$337.90~~ \$237.90\*



E. BLACK



back zipper

genuine leather



"Beautiful jacket! Leather is soft, lining is warm and size is true to fit for me!"

— FAN OF ELLOS



F. BLACK

zip pockets

genuine leather



F. BLACK



# outfitting 101

Look sharp and polished in workwear that works together.

FROM **26<sup>90</sup>**



A  
BLACK  
up to  
size  
38/40!  
↓

**A. MOCK NECK TEE**  
2507-37822-0645  
Rayon/Spandex Jersey.  
10/12-38/40  
Solid: ~~\$39.90~~ **\$26.90\***  
Print: ~~\$45.90~~ **\$31.90\***

**B. EVERYDAY SLIM PANTS**  
2504-38632-0645  
Polyester/Rayon/Spandex.  
10-34  
Solid: ~~\$75.90~~ **\$49.90\***  
Plaid: ~~\$79.90~~ **\$54.90\***

**C. LACE-UP OXFORD FLATS**  
2536-15686-0645  
Suede. Professional Leather Clean.  
Full & half sizes 7-11M, 12M  
~~\$146.90~~ **\$89.90\***

A.  
WHITE  
D., B.  
BLACK  
WHITE  
PLAID  
C.  
BLACK



**D. EVERYDAY BLAZER**  
2504-38006-0645  
Polyester/Rayon/Spandex.  
10-34  
Solid: ~~\$118.90~~ **\$74.90\***  
Plaid: ~~\$124.90~~ **\$79.90\***

**E. BUTTON-CUFF PULLOVER**  
2556-25847-0645  
Cotton/Nylon/Rayon/Cashmere.  
10/12-34/36  
~~\$73.90~~ **\$43.90\***

**F. PENCIL SKIRT**  
2504-25725-0645  
Polyester/Rayon/Spandex.  
10-34  
Solid: ~~\$67.90~~ **\$44.90\***  
Plaid: ~~\$73.90~~ **\$49.90\***

All apparel is machine washable, imported.  
*\*Red prices reflect discount.*

Suit Separates  
FROM  
**44<sup>90</sup>**

E.  
BLACK  
D., F.  
BLACK  
WHITE  
PLAID

button  
←  
cuffs



"I bought the blazer and pants. It's an AWESOME suit!"

— FAN OF ELLOS



BLACK WHITE PLAID



BLACK WHITE PLAID



UP TO  
**40% off**  
Everything!



A. **NEW!** BLACK  
double zipper



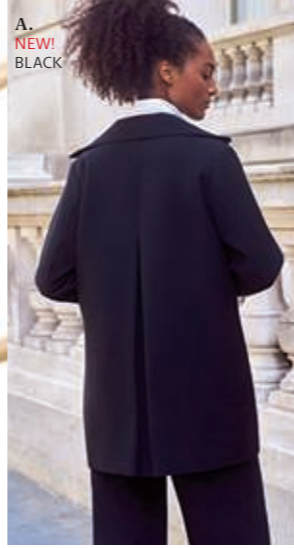
B. WHITE



C. BLACK

- A. NEW! ZIP-FRONT A-LINE COAT WITH BACK INVERTED PLEAT**  
2529-06620-0645  
Polyester/Rayon/Spandex.  
10-34 ~~\$159.90~~ **\$109.90\***
- B. RELAXED BUTTON FRONT STRETCH TUNIC SHIRT**  
2550-10516-0645  
Cotton/Spandex Poplin.  
10-34 ~~\$73.90~~ **\$39.90\***
- C. WOVEN WIDE LEG PANTS**  
2549-38517-0645  
Polyester/Spandex Crepe.  
10-38 ~~\$107.90~~ **\$69.90\***

up to size 38!



A. **NEW!** BLACK  
B. WHITE  
C. BLACK



FROM  
**34<sup>90</sup>**

- D. FRENCH BLUE WHITE STRIPE
- E. **NEW!** DARK WASH



full elastic waist



F. DARK WASH  
full elastic waist



G. BLACK

- D. BUTTON-DOWN SHIRT**  
2530-37559-0645 Cotton Poplin.  
10-38 ~~\$56.90~~ **\$34.90\***
- E. NEW! ELASTIC WAIST PULL ON WIDE LEG JEANS**  
2549-21799-0645 Cotton Denim.  
10-36 ~~\$69.90~~ **\$42.90\***
- F. NEW! ELASTIC WAIST PULL-ON DENIM SHORTS**  
2549-21718-0645 Cotton Denim.  
10-36 ~~\$49.90~~ **\$34.90\***
- G. SNAP-HEM PONTE LEGGINGS** 2525-09500-0645  
Polyester/Rayon/Spandex Ponte.  
10/12-38/40 ~~\$67.90~~ **\$39.90\***

All apparel is machine washable, imported.  
\*Red prices reflect discount.

modern gets  
**CLASSIC**  
Forever styles for the modern wardrobe.  
**FROM 34<sup>90</sup>**



B. WHITE  
F. **NEW!** DARK WASH



B. WHITE  
G. BLACK

snaps at hem



A.

BLACK

NAVY



B.

NAVY STRIPE

MAROON RED STRIPE

BLACK STRIPE

SAVE UP TO \$60



C.

BLACK

DARK BASIL

NEW KHAKI

STONE

NAVY

SLATE



striped lining

A. BLACK  
B. BLACK STRIPE  
C. NEW KHAKI

up to size 38!

*outfit*  
**MAKERS**  
Essential bottoms + a pretty blouse + the ultimate blazer



B. NAVY STRIPE

A. LONG BOYFRIEND BLAZER

2532-05924-0645

Polyester/Rayon/Spandex.

10-34 \$157.90 \$97.90\*

B. BUTTON PLACKET POPOVER TUNIC

2530-15381-0645

Woven Rayon.

10-38 \$73.90 \$43.90\*

C. CLASSIC CHINO PANTS

2549-37550-0645

Cotton/Spandex Twill.

10-38 \$73.90 \$44.90\*

D. SHORT SLEEVE INVERTED PLEAT TUNIC

2530-48938-0645

Woven Rayon.

10/12-34/36

\$59.90 \$34.90\*

E. FLORAL NOTCH-NECK BLOUSE

2530-09798-0645

Polyester.

10-34 \$68.90 \$42.90\*

F. FLUTTER SLEEVE BLOUSE

2530-43000-0645

Rayon Crepe.

10-34 \$62.90 \$36.90\*

G. 3/4 TIE-SLEEVE BLOUSE

2530-19210-0645

Polyester Georgette.

10-38 \$73.90 \$43.90\*

H. STRETCH BOOTCUT PANT WITH SIDE ZIP

2549-42693-0645

Rayon/Nylon/Spandex.

10/12-34/36

\$79.90 \$46.90\*



D. MULTI FLORAL

NOW 34.90



E. RAINFOREST GREEN FLORAL



F. BLACK FLORAL



D. MULTI FLORAL



E. RAINFOREST GREEN FLORAL

RUBY RED FLORAL



F. PLUM BLUE FLORAL PRINT

BLACK FLORAL



ANTIQUE JADE FLORAL



G. BLUE LAKE FLORAL

SOFT BEIGE BLACK DOT



EMERALD SEA FLORAL



H. BLACK

side zipper

All machine washable, imported. \*Red prices reflect discount.

FROM  
**39<sup>90</sup>**



A. LIGHT BLUE STONEWASH  
B. NAVY

both up to size 38!



C. WHITE FRENCH BLUE STRIPE  
NAVY WHITE DOT  
POPPY RED FLORAL



D. CLASSIC RED FLORAL

FROM  
**36<sup>90</sup>**



C. NAVY WHITE DOT



D. CLASSIC RED FLORAL

Straw Bag Pg. 52



E. BRIGHT COBALT WHITE DITSY

into the  
**BLUE**  
The color that flatters everyone in looks from casual to classic.  
**SAVE UP TO \$40**

UP TO  
**40% off**  
Everything!



F. NAVY  
G. STONEWASH

up to size 38/40!



A. MEDIUM STONEWASH  
LIGHT BLUE STONEWASH



B. BLACK NAVY

- A. CLASSIC DENIM JACKET 2532-24826-0645**  
Cotton/Spandex/ Polyester/ Denim.  
10-38 ~~\$96.90~~ **\$59.90\***
- B. TIERED CRINKLE SKIRT 2549-37488-0645**  
Cotton Cambric.  
10-38 ~~\$67.90~~ **\$39.90\***
- C. SANDY SHIRTWAIST DRESS 2505-37527-0645**  
Cotton Poplin.  
10/12-38/40 ~~\$96.90~~ **\$56.90\***
- D. TIE-SLEEVE DRESS 2505-05779-0645**  
Rayon.  
10-36 ~~\$62.90~~ **\$36.90\***

- E. TIERED DRESS WITH HENLEY NECKLINE 2505-45913-0645**  
Woven Rayon.  
10/12-34/36 ~~\$89.90~~ **\$49.90\***
- F. DRAPED OPEN FRONT CARDIGAN 2556-37968-0645**  
Rayon/Polyester/ Modal/Wool.  
10/12-38/40 ~~\$67.90~~ **\$42.90\***
- G. HIGH-WAIST WIDE LEG JEANS 2549-28722-0645**  
Cotton/Spandex Denim.  
10-34 ~~\$79.90~~ **\$49.90\***



E. BRIGHT COBALT WHITE DITSY



F. BLACK NAVY CLASSIC CAMEL CLASSIC RED



G. HIGH-WAIST STONEWASH

All machine washable, imported.  
*\*Red prices reflect discount.*



A. NAVY FLORAL PRINT  
ROSE MULTI FLORAL  
BLACK GREEN DITSY FLORAL



A. BLACK GREEN DITSY FLORAL

up to size 38/40!

**PRINTS**  
*charming*  
Florals in shades of blue and green fashioned into enchanting tiered styles.

**FROM**  
**46<sup>90</sup>**



B. BLACK GREEN FLORAL



C. BLACK GREEN FLORAL



New Print!

UP TO  
**40% off**  
Everything!



B. BLACK GREEN FLORAL



C. ROSE MULTI PRINT



NEW! WHITE MULTI FLORAL  
BLACK CLOUD BLUE PRINT



D. BLUE VIOLET PRINT

adjustable straps



D. BLUE VIOLET PRINT



E. IVORY GREEN DITSY FLORAL  
BLUE VIOLET PRINT



F. MEDIUM STONEWASH

up to size 38!



E. IVORY GREEN DITSY FLORAL

pockets!

elastic back

SAVE UP TO  
**\$40**

D. TIERED COTTON MIDI DRESS  
2505-03004-0645  
Woven Cotton.  
10/12-34/36  
~~\$89.90~~ \$49.90\*

E. TIERED COTTON MAXI DRESS  
2505-03381-0645  
Woven Cotton.  
10/12-26/28  
~~\$89.90~~ \$49.90\*

F. CLASSIC DENIM JACKET  
2532-24826-0645  
Cotton/Spandex/  
Polyester Denim.  
10-38 ~~\$96.90~~ \$59.90\*



F. LIGHT BLUE STONEWASH  
E. BLUE VIOLET PRINT

A. RUFFLED EMPIRE DRESS  
2505-15554-0645  
Rayon Crepe.  
10/12-38/40 ~~\$96.90~~ \$56.90\*

B. EMPIRE V-NECK RUFFLED DRESS  
2505-35951-0645  
Rayon Crepe.  
10-34 ~~\$96.90~~ \$49.90\*

C. TIERED TUNIC WITH NOTCH V-NECK  
2530-33082-0645  
Woven Rayon.  
10/12-38/40 ~~\$79.90~~ \$46.90\*

All machine washable, imported.  
\*Red prices reflect discount.

A., B.



A., B.  
HEATHER SAND  
C.  
BLACK

C.



D.



UP TO  
**40%** off  
Everything!

oversized  
pocket!



Linen-Blend  
Shorts  
NOW  
**29<sup>90</sup>**



E.  
NATURAL

stylish  
sun shield!

F.



ANTIQUE JADE

DUSTY PINK

DUSTY CORNFLOWER

G.



WHITE

LIGHT STONEWASH

RASPBERRY

WHITE

LILAC SMOKE

NEW!  
GOLDEN  
MAIZE

Crop Bootcut

Tunic  
NOW  
**34<sup>90</sup>**

F.  
DUSTY PINK  
G.  
LIGHT  
STONEWASH  
E.  
NATURAL

A. OVERSIZED BUTTON-FRONT LINEN BLEND SHIRT 2530-48942-0645  
Linen/Rayon.  
10/12-34/36  
~~\$66.90~~ \$39.90\*

B. LINEN BLEND ELASTIC WAIST SHORTS 2549-48735-0645  
Linen/Rayon.  
10-34 ~~\$49.90~~ \$29.90\*

C. KNIT CAMISOLE 2507-09698-0645  
Cotton/Spandex Jersey.  
10/12-38/40  
~~\$28.90~~ \$17.90\*

D. BOYFRIEND JEANS 2549-37522-0645  
Cotton/Spandex Denim.  
10-38  
Distressed: ~~\$79.90~~ \$31.90\*  
Washes: ~~\$79.90~~ \$49.90\*

E. STRAW PANAMA HAT 2540-41524-0645  
Paper. Do not wash.  
~~\$36.90~~ \$19.90\*

F. BUTTON-FRONT LINEN-BLEND TUNIC 2530-18483-0645  
Linen/Rayon.  
10/12-42/44  
~~\$63.90~~ \$34.90\*

G. CROP BOOTCUT JEANS 2549-08717-0645  
Cotton/Polyester/Spandex Denim.  
10-34 ~~\$68.90~~ \$39.90\*

All machine washable, imported.

\*Red prices reflect discount.

up  
to size  
42/44!



UP TO  
**40% off**  
Everything!

long last  
**LINEN!**  
Enjoy the season-spanning  
comfort of this easy-care  
linen blend.  
**FROM**  
**36<sup>90</sup>**



up to size 42/44!

up to size 38!

New Color!



A. WHITE  
B. NAVY

D. STONE



up to size 42/44!



E. FRESH POMEGRANATE

up to size 38!



FROM  
**39<sup>90</sup>**



**A. OVERSIZED LINEN-BLEND TUNIC**  
2530-13598-0645  
Linen/Rayon.  
10/12-42/44  
~~\$67.90~~ **\$36.90\***

**B. LINEN-BLEND DRAWSTRING PANTS**  
2549-15768-0645  
Linen/Rayon.  
10-38 ~~\$67.90~~ **\$39.90\***

**C. LINEN-BLEND DRAWSTRING CAPRIS**  
2549-13737-0645  
Linen/Rayon.  
10-38 ~~\$62.90~~ **\$36.90\***

**D. LINEN-BLEND HANKY HEM TUNIC**  
2530-41449-0645  
Linen/Rayon.  
10/12-42/44  
~~\$79.90~~ **\$39.90\***

*\*Red prices reflect discount.*  
*All machine washable, imported.*



F. NAVY

pockets!



**E. BUTTON FRONT LINEN-BLEND SHIRT DRESS**  
2505-08081-0645 Linen/Rayon.  
10-38 ~~\$79.90~~ **\$42.90\***

**F. LINEN-BLEND A-LINE DRESS** 2505-22050-0645  
Linen/Rayon.  
10-34 ~~\$79.90~~ **\$39.90\***



ellos loves you back! As our customer, you & your needs always come first.

SHOP WWW.ELLOS.US

- Designed in Sweden, we offer modern & effortless fashion in sizes 10 to 44
Enjoy 20% OFF when you sign up for our emails
Free exchanges always!

SO MANY WAYS TO ORDER

- Just order online at www.ellos.us
To place an order, please call 1-800-405-3650
If you're a hearing & speech impaired customer with TDD equipment, dial 1.800.456.7161

PAYMENT METHODS

Since ellos is one of the FullBeauty Brands™, you can use your Woman Within®, Roaman's®, or Jessica London® card to make your ellos purchase. Don't have a credit card? Visit ellos.us/card to apply!



Since September 2003, telephone calls to or from our FullBeauty Brands family of companies, including our customer service center, have been monitored and recorded for record-keeping, training, and quality assurance purposes.

FIND THE RIGHT FIT

Our merchandise fits true to size! Everything is tailored to create a beautiful, flattering look. If you measure in between sizes or prefer a closer fit, order a smaller size. If you prefer a loose fit, order a larger size.

- 1. Measure your bust around the fullest part, while wearing your usual undergarments.
2. Measure your waist at the smallest part of your natural waistline.
3. Measure your hips around the fullest part, about 8" below waistline.

Note: Garments are proportioned to fit heights 5'4" to 5'7" in U.S. sizes.

Size chart table with columns for sizes (10/12, 14/16, 18/20, 22/24) and rows for bust, waist, hip measurements.

SHIPPING & HANDLING

Shipping and handling table with columns: MERCH TOTAL, ADD\*, DELIVERY, DELIVERY TIME, ADD. Includes rates for standard, express, and super fast delivery.

SHIPPING SURCHARGE\*\* \$0.99

\*\*In response to inflation pressures and surcharges passed along by our carriers, a \$0.99 surcharge per order will be added.

Rates are subject to change. All orders to CO will have 27¢ delivery fee added to the total.

LOVE IT OR EXCHANGE IT FOR FREE!

Exchanges If we have not delighted you, all unworn, unwashed or defective merchandise may be exchanged for FREE within 60 days of purchase (excludes items shipped directly from 3rd party brands and items purchased through Amazon or using PayPal).

Returns For complete details go online at ellos.us/help or call customer care 1-800-405-3653.

WE'RE HERE TO HELP!

For questions about products, order status, returns, or anything else ellos, contact us through our "Live Chat" feature or for customer service assistance, please call 1-800-405-3653

SPREAD THE LOVE!

Get social and start following ellos today.



A. SUNDANCE

B. DREAM BLUE WHITE FLORAL



Knit PICKS Stretch knit dresses, all tiered up for sunny days! FROM 29.90

A. TIERED TEE DRESS 2505-59235-0645

Cotton/Spandex Jersey. 10/12-34/36 \$56.90 \$29.90\*

B. SLEEVELESS TIERED MAXI DRESS 2505-18207-0645

Rayon/Spandex Jersey. 10/12-34/36 \$73.90 \$39.90\*

\*Red prices reflect discount. All machine washable, imported.

WHEN YOU OPEN AND USE A FULLBEAUTY PLATINUM CREDIT CARD:

\$10 off + \$10 Bonus Reward = \$20 Savings! Your First Purchase of \$25+ In Your First Billing Statement

EARN REWARDS EVERY TIME YOU SHOP \$10 Reward for every 200 points earned at FULLBEAUTY Brands.

FREE SHIPPING UP TO 4 TIMES A YEAR! Minimum purchase of \$75 when you use your Fullbeauty Platinum Credit Card. Valid Online Only.

Valid one time only. The entire transaction amount after discount must be placed on the Fullbeauty Platinum Credit Card.

Offer is exclusive to Fullbeauty Platinum Credit Card holders enrolled in the Fullbeauty Rewards program. Account must be in good standing. Offer will be received in your first billing statement.

Offer is exclusive to Fullbeauty Platinum Credit Card holders enrolled in the Fullbeauty Rewards program. This rewards program is provided by Fullbeauty and its terms may change at any time.

Limited to standard shipping. Expires 12/31/2024. Must be logged into account. Limit of 4. Duplicate offers will not be accepted.

Credit card offers are subject to credit approval. Fullbeauty Platinum Credit Card Accounts are issued by Comenity Bank.

# FINISHING touches

The style you love, the comfort you crave. Find more outfit-completing shoes & accessories online @ellos.us

on-trend buckle bootie



**A. TWO BUCKLE SUEDE BOOTIE**  
2535-15689-0645  
Suede. Black. Spot Clean. Full & half sizes 7-11M, 12M. ~~\$157.90~~ \$79.90\*



**B. PATENT STUDED BOOTIE**  
2535-25862-0645  
Patent Leather. Spot Clean. Black. Full sizes 7-10M. ~~\$179.90~~ \$119.90\*



**C. LACE-UP FLAT ESPADRILLES**  
2536-06130-0645 Micro Suede Lining, Crepe Outsole. Spot clean. Black White Stripe. Full & half sizes 7-11, 12. M, W, WW ~~\$54.90~~ \$29.90\*



**D. MULTI-STRAP LEATHER SANDAL** 2536-22266-0645  
Leather. Spot Clean. Black, White. Full & half sizes 7-11, 12. M, W, WW. ~~\$67.90~~ \$39.90\*

available in W WIDTH!



**E. ESPADRILLE FLATS**  
2536-41677-0645  
Micro Suede, Polyester. Spot Clean. Black, Navy. Full & half sizes 7-11, 12. M, W, WW. ~~\$54.90~~ \$29.90\*



**F. LOVE SNEAKER**  
2536-39031-0645  
Faux Leather. Spot Clean. White. Full & half sizes 7-11, 12. M, W, WW. ~~\$84.90~~ \$44.90\*



**G. STUDED LOAFER**  
2536-20021-0645  
Patent Polyurethane. Spot clean. Black. Full & half sizes 7-11M, 12M. ~~\$79.90~~ \$49.90\*



**H. SUEDE BLOCK HEEL SANDAL**  
2536-22271-0645  
Suede. Spot Clean. 3" heel. Rose Dust, Black. Full & half sizes 7-11M, 12M. ~~\$89.90~~ \$44.90\*



**J. HOBO SHOULDER BAG**  
2540-10120-0645  
Faux Leather. Spot Clean. Blush, Black. ~~\$67.90~~ \$39.90\*



**K. MULTI-STRAP TOTE BAG**  
2540-07698-0645  
Faux Pebble Leather. Spot Clean. ~~\$74.90~~ \$44.90\*



**L. LACE-UP OXFORD FLATS**  
2536-15686-0645  
Suede. Professional Leather Clean. Black. Full & half sizes 7-11M, 12M. ~~\$146.90~~ \$89.90\*



**M. MULTI-ZIP CROSSBODY BAG**  
2540-09658-0645  
Faux Leather. Spot Clean. Black. ~~\$51.90~~ \$32.90\*



**N. LEATHER BELT**  
2540-15684-0645  
Spot Clean. USA. Black, Pecan Brown. 10/12-34/36 ~~\$51.90~~ \$32.90\*



**P. SLINGBACK FLATS**  
2536-09688-0645  
Faux Leather. Spot Clean. Black, Silver Metallic. Full & half sizes 7-11, 12. M, W, WW. ~~\$62.90~~ \$36.90\*



**Q. LEATHER CHELSEA BOOTS**  
2535-24914-0645  
Leather. Black. Professional Leather Clean. Whole sizes only 7-12. M, W, WW. ~~\$146.90~~ \$94.90\*

FROM 32.90

now in W & WW WIDTHS!

▲ WARNING: Cancer and Reproductive Harm - www.65Warnings.ca.gov.



**R. THE DARBY SHOOTIE BY COMFORTVIEW®** 2516-32318-0645  
Suede-like upper. Full inside zipper. 2" heel. Full and half sizes 7-11, 12. M ~~\$99.99~~ \$49.99\* W, WW ~~\$109.99~~ \$56.99\*



**S. \*THE JADE SLIP ON WEDGE BY COMFORTVIEW®** 2516-00431-0645  
Suede-like or fabric upper with leather-like or patent leather-like captoe. 1 1/2" heel. Full and half sizes 7-11, 12. M ~~\$99.99~~ \$49.99\* W, WW ~~\$109.99~~ \$56.99\*



**T. THE RIDER SLINGBACK BY COMFORTVIEW®** 2516-11475-0645  
Leather-like upper. Adjustable buckle with elastic for comfort. 1/4" heel. Full and half sizes 7-11, 12, 13. M ~~\$99.99~~ \$49.99\* W, WW ~~\$109.99~~ \$56.99\*  
All manmade, imported. M: Medium W: Wide WW: Wide wide  
\*Print shoes have unique pattern variations. \*Red prices reflect discount.



**U. THE LOUCIA PUMP BY COMFORTVIEW®** 2516-09403-0645  
Leather-like upper. Adjustable buckle with hidden elastic for comfort. Full back zipper. 1" heel. Full and half sizes 7-11, 12. M ~~\$89.99~~ \$44.99\* W, WW ~~\$99.99~~ \$51.99\*



**V. THE NEVELLE SLIP ON FLAT BY COMFORTVIEW®** 2516-32317-0645  
Suede-like upper. 1" heel. Full and half sizes 7-11, 12. M ~~\$89.99~~ \$44.99\* W, WW ~~\$99.99~~ \$51.99\*



V. NAVY

**A. THE MILENA SLIP ON FLAT BY COMFORTVIEW®** 2536-14042-0645  
Suede-like upper. 1/4" heel. Full and half sizes 7-11, 12  
M \$79.99 \$39.99\* W,WW \$89.99 \$46.99\*

**A. BURGUNDY**

FROM 39.99

WIDE-WIDE WIDTH

WIDE-WIDE WIDTH

BURGUNDY NAVY CAMEL BLACK SLATE GREY

padded insole for comfort

**D. CV SPORT HONEY SNEAKER BY COMFORTVIEW®** 2536-23803-0645  
Leather-like upper. Padded collar. Tie closure. 1" heel. Full and half sizes 7-11, 12.  
M \$99.99 \$49.99\* W,WW \$109.99 \$56.99\*

**E. CV SPORT ARIYA SLIP ON SNEAKER BY COMFORTVIEW®** 2536-04930-0645  
Knit upper with elastic bungee lace closure. Padded insoles. Flexible, skid-resistant outsole. 1" heel. Full and half sizes 7-11, 12, 13. Size 13 not available in Sweet Grape, French Blue and Crimson. M \$89.99 \$44.99\* W,WW \$99.99 \$51.99\*

WIDE-WIDE WIDTH

WIDE-WIDE WIDTH

WIDE TOE BOX

adjustable tie closure for custom fit

Bungee-Elastic laces for easy slip on

back pull tab for easy on/off

CUSHIONED INSOLE molds to your foot for comfort you'll never forget!

comfortview® SAVE UP TO 50%

D. DENIM WHITE DARK OLIVE HONEY BLACK

E. CRIMSON PEARL GREY NAVY FRENCH BLUE WHITE SWEET GRAPE BLACK

flex APPEAL FROM 34.99  
Flex your style with fashion flats and sneakers made to move with you.

**B. THE ALVA FISHERMAN FLAT BY COMFORTVIEW®** 2536-07529-0645  
Leather-like upper. Adjustable, self-adhesive strap. Flexible, lightweight lug bottom. 1/4" stable heel. Full and half sizes 7-11, 12.  
M \$89.99 \$44.99\* W, WW \$99.99 \$51.99\*

BROWN BLACK

WIDE-WIDE WIDTH

**C. \*THE BETHANY SLIP ON FLAT BY COMFORTVIEW®** 2536-26388-0645  
Stretch woven fabric upper. Brown, Crimson and Dark Hunter have velvet and elastic upper. 1" heel. Full and half sizes 7-11, 12, 13. Size 13 not available in Crimson, Brown, Dark Hunter, Navy Metallic, Black Metallic, Bronze and Grey Multi.  
M \$89.99 \$44.99\* W, WW \$99.99 \$51.99\*

GREY MULTI WHITE KHAKI METALLIC BRONZE DARK HUNTER NAVY METALLIC CRIMSON BROWN BLACK METALLIC NAVY SOLID BLACK PEWTER

WIDE-WIDE WIDTH

All manmade. Imported. M: Medium W: Wide WW: Wide wide\* Print shoes have unique pattern variations.

**F. NAVY BLACK**

WIDE-WIDE WIDTH

EASY SLIP ON

**G. NAVY BROWN BLACK**

WIDE-WIDE WIDTH

F. THE LYRA SLIP ON FLAT BY COMFORTVIEW® 2536-11595-0645  
Stretch fabric upper. Grooved bottom. 1" heel. Full and half sizes 7-11, 12.  
M \$79.99 \$39.99\* W, WW \$89.99 \$46.99\*

G. THE CARLA MARY JANE FLAT BY COMFORTVIEW® 2536-11373-0645  
Leather-like upper. Self-adhesive strap for a custom fit. Lightweight bottom with cupped insole to stabilize heel. 1/4" heel. Full and half sizes 7-11, 12.  
M \$89.99 \$44.99\* W, WW \$99.99 \$51.99\*

**H. NAVY BROWN DARK BERRY GREY BLACK**

WIDE-WIDE WIDTH

H. THE ESTELLE SLIP ON MULE BY COMFORTVIEW® 2536-65467-0645  
Crocodile textured patent leather-like upper. Double side elastic for a custom fit. Grooved bottom with new heel pod to add spring to your step. 1" heel. Full and half sizes 7-11, 12.  
M \$69.99 \$34.99\* W,WW \$79.99 \$41.99\*

FROM 34.99

**J. GUNMETAL ROSE GOLD BLACK**

WIDE-WIDE WIDTH

J. THE RAFIKA SLIP ON FLAT BY COMFORTVIEW® 2536-13339-0645  
Leather-like upper. 1/2" heel with bow detail on vamp. Full and half sizes 7-11, 12.  
M \$99.99 \$49.99\* W, WW \$109.99 \$56.99\*

A. BLACK/HOCUS POCUS

FROM 19.99

# Disney SHOP

Even more styles to love online!



- A-L. CREWNECK SHORT-SLEEVE DISNEY GRAPHIC TEES**  
28" length. 100% cotton. Heathers: cotton/poly. Sizes S-6X
- A. BLACK/HOCUS POCUS** 2507-21584-0645 \$39.99 \$27.99\*
  - B. BLACK/DISNEY VILLIANS** 2507-21586-0645 \$39.99 \$27.99\*
  - C. ORANGE/MICKEY MUMMY** 2507-21980-0645 \$59.99 \$27.99\*
  - D. HEATHER CHARCOAL/MINNIE WITCH** 2507-19785-0645 \$59.99 \$24.99\*
  - E. PURPLE/HOCUS POCUS** 2507-43777-0645 \$59.99 \$19.99\*
  - F. BLACK/NIGHTMARE BEFORE CHRISTMAS** 2507-50278-0645 \$39.99 \$27.99\*
  - G. HEATHER CHARCOAL/JACK SKELLINGTON SANTA** 2507-50279-0645 \$39.99 \$27.99\*
  - H. NAVY/STITCH FLOWERS** 2507-19785-0645 \$59.99 \$24.99\*
  - I. WHITE/HEADS PRINT** 2507-43777-0645 \$59.99 \$19.99\*
  - J. RASPBERRY/MINNIE** 2507-43787-0645 \$59.99 \$19.99\*
  - K. NAVY/EEYORE** 2507-00082-0645 \$59.99 \$19.99\*
  - L. HEATHER GREY/DISNEY GROUP** 2507-43782-0645 \$59.99 \$19.99\*

new!

M. SAGE GREEN/MICKEY



SAVE UP TO \$30



- M-O. V-NECK SHORT-SLEEVE POINT HEM DISNEY TEE**  
26" length. Jersey rayon. Sizes S-6X \$59.99 \$27.99\*
- M. SAGE GREEN/MICKEY** 2507-20195-0645
  - N. CHARCOAL HEATHER/POOH FRIENDS** 2507-20203-0645
  - O. PINK/WINNIE POOH** 2507-20204-0645
- P-V. V-NECK SHORT-SLEEVE DISNEY GRAPHIC TEES**  
28" length. 100% cotton. Heathers: cotton/poly. Sizes S-6X
- P. OFF WHITE/MICKEY FRIENDS** 2507-19780-0645 \$39.99 \$24.99\*
  - Q. DARK BLUE/MICKEY MINNIE** 2507-19788-0645 \$59.99 \$24.99\*
  - R. BLUE/EYEORE** 2507-05642-0645 \$59.99 \$19.99\*
  - S. PINK/DISNEY GROUP** 2507-43789-0645 \$59.99 \$19.99\*
- T. WHITE/TINKERBELL** 2507-43788-0645 \$59.99 \$19.99\*
- U. BRIGHT GOLD/WINNIE BEE** 2507-43790-0645 \$59.99 \$19.99\*
- V. RASPBERRY/MINNIE** 2507-00434-0645 \$59.99 \$19.99\*
- W-X. PULLOVER DISNEY HOODIES**  
Attached hood. Wide sleeves with drop shoulders. Side slits. 30" tunic length. Cotton/spandex. Sizes S-5X \$69.99 \$39.99\*
- W. HEATHER GREY/MICKEY WINK** 2507-00769-0645
  - X. TEAL/EEYORE** 2507-00783-0645
- Y. NAVY/EEYORE FLEECE DISNEY SWEATSHIRT** 2507-00839-0645 30" tunic length. Cotton/poly. Sizes M-6X \$59.99 \$44.99\*
- Z. DISNEY ZIP-FRONT FLEECE HOODIE BLACK/MICKEY EARS** 2532-00564-0645  
Side pockets. 28" length. Cotton/polyester. Sizes M-5X \$79.99 \$54.99\*

LIMITED SIZES & QUANTITIES  
AS LOW AS \$15.98

**CLEARANCE**  
**ALL 60% OFF**  
Even more styles to love online!



- |   |   |   |
|---|---|---|
| <b>A-G. CREWNECK SHORT-SLEEVE DISNEY GRAPHIC TEES</b> 28" length. 100% Cotton. Heathers: Cotton/poly. Sizes S-6X <del>\$39.99</del> <b>\$15.98*</b> | <b>F. TEAL/LITTLE MERMAID</b> 2507-05568-0645   | <b>J. BLACK/POOH BED</b> 2507-43798-0645  |
| <b>A. FRENCH BLUE/MICKEY</b> 2507-43783-0645  | <b>G. PINK/LITTLE MERMAID</b> 2507-05571-0645   | <b>K. HEATHER GREY/MICKEY KISS</b> 2507-43795-0645  |
| <b>B. CLASSIC RED/POOH</b> 2507-43780-0645  | <b>H. HANDKERCHIEF HEM DISNEY TUNIC</b> 38" longest length. 100% Cotton. 2507-43853-0645                          | <b>L-M. PULLOVER DISNEY HOODIES</b> 30" tunic length. Cotton/spandex. Sizes S-5X <del>\$69.99</del> <b>\$27.98*</b> |
| <b>C. OLIVE GREEN/VINTAGE MICKEY</b> 2507-05565-0645  | <b>J-K. FLEECE DISNEY SWEATSHIRT</b> 30" tunic length. Cotton/poly. Sizes M-6X <del>\$59.99</del> <b>\$23.98*</b> | <b>L. RASPBERRY/MINNIE</b> 2507-43800-0645  |
| <b>D. BLACK/MINNIE EARS</b> 2507-05560-0645   |   | <b>M. BLACK/TINKERBELL</b> 2507-43801-0645  |
| <b>E. BLACK/OUTLINE MINNIE</b> 2507-05561-0645  |   |   |

P. BLACK/PEANUT TRICK OR TREAT



Z. BLACK/MUMMY SNOOPY



- N-V CREWNECK SHORT-SLEEVE PEANUTS GRAPHIC TEES**  
28" length. 100% Cotton. Heathers: cotton/poly. Sizes S-6X
- N. CREWNECK NAVY/SNOOPY MUMMY**  
2507-21984-0645 ~~\$39.99~~ **\$27.99\***
- P. CREWNECK BLACK/PEANUTS TRICK OR TREAT**  
2507-21981-0645 ~~\$39.99~~ **\$27.99\***
- Q. CREWNECK BLACK/PUMPKIN SNOOPY**  
2507-00433-0645 ~~\$39.99~~ **\$27.99\***
- R. CREWNECK PURPLE/SNOOPY** 2507-50280-0645 ~~\$39.99~~ **\$27.99\***
- S. CREWNECK SAGE GREEN/SNOOPY**  
2507-19793-0645 ~~\$39.99~~ **\$24.99\***
- T. CREWNECK WHITE/SNOOPY PRINT**  
2507-19794-0645 ~~\$39.99~~ **\$24.99\***

SHOP GREAT NEW GRAPHICS AND STYLES!

FROM  
**19.99**

**PEANUTS SHOP**

Even more styles to love online!



- N. NAVY/SNOOPY MUMMY** 2507-20210-0645 ~~\$39.99~~ **\$24.99\***
- P. CREWNECK BLACK/SNOOPY LEOPARD**  
2507-00286-0645 ~~\$39.99~~ **\$19.99\***
- W-X V-NECK SHORT SLEEVE PEANUTS GRAPHIC TEES**  
28" length. 100% Cotton. Heathers: cotton/poly. Sizes S-6X ~~\$39.99~~ **\$24.99\***
- W. V-NECK DARK BLUE/PEANUTS CREW**  
2507-19791-0645
- X. V-NECK BLACK/SNOOPY WOODSTOCK**  
2507-20206-0645
- Y. V-NECK SHORT-SLEEVE POINT HEM PURPLE/SNOOPY TEE** 2507-20205-0645  
26" length. Jersey Rayon. Sizes S-6X ~~\$39.99~~ **\$27.99\***
- Z-BB FLEECE PEANUTS SWEATSHIRTS**  
30" tunic length. Cotton/poly. Sizes M-6X ~~\$59.99~~ **\$44.99\***
- Z. BLACK/MUMMY SNOOPY** 2507-00867-0645
- AA. BLACK/SNOOPY** 2507-05807-0645
- BB. NAVY/SNOOPY** 2507-43858-0645
- CC-EE. PULLOVER PEANUTS HOODIES**  
Attached hood. Wide sleeves with drop shoulders. Side slits. 30" tunic length. Cotton/spandex.
- CC. HEATHER GREY/SNOOPY WOODSTOCK**  
2507-43859-0645 Sizes S-5X ~~\$69.99~~ **\$49.99\***
- DD. BLUE/SNOOPY HOUSE** 2507-05817-0645  
Sizes S-6X ~~\$69.99~~ **\$44.99\***
- EE. BLACK/SNOOPY** 2507-00654-0645  
Sizes S-6X ~~\$69.99~~ **\$39.99\***
- \*Red prices reflect discount. All machine washable, imported.*



All hand washable, imported. \*Red prices reflect discount.

**FROM 19<sup>99</sup>**

**B.** BLUE PURPLE BRUSHSTROKE  
**D.** BLACK



Swimwear UP TO **60% off**

*long length*  
**TANKINIS**  
The body benefits are built in.  
Great style, fab fit, cool comfort.  
**FROM 36<sup>99</sup>**



**F.** COOL TEXTURED PALM  
**H.** NAVY

- A. LONGER LENGTH HANKERCHIEF TANKINI TOP 2564-22259-0645** Pretty mesh detail at the chest. Empire waist. Built-in foam cups. Adjustable straps. 36" longest length. Nylon/spandex. Sizes 14-44 ~~\$99.99~~ **\$39.99\***
- B. RACERBACK TANKINI TOP 2564-01980-0645** A gorgeous combination of sporty and feminine, this tankini features contrast binding and a shelf bra for superior support. 28" length. Nylon/spandex. 14-34 ~~\$89.99~~ **\$36.99\***
- C. SWIM BIKE SHORT 2565-19509-0645** Sits at natural waist. Full back coverage. 8" inseam. Poly/spandex. Sizes 14-44 ~~\$49.99~~ **\$19.99\***
- D. HIGH-WAISTED SWIM CAPRI 2565-12542-0645** Featuring lattice and mesh detail at the hem. Power-mesh lining for tummy control. Anti-chafing. 17" inseam. Nylon/spandex. Sizes 14-40 ~~\$74.99~~ **\$29.99\***
- E. TIERED-RUFFLE TANKINI TOP 2564-19213-0645** V-neck, shelf bra with molded cups for bust support. Adjustable straps. 24" length. Nylon/spandex. Sizes 14-34 ~~\$99.99~~ **\$39.99\***
- F. BRAIDED RACERBACK TANKINI TOP 2564-04265-0645** Ruched V-neck with macramé racerback detail. Soft cups, empire waist. 29" length. Nylon/spandex. Sizes 14-40 ~~\$100.99~~ **\$39.99\***
- G. A-LINE SWIM SKIRT 2565-01131-0645** Built-in brief with a power-mesh lining for tummy control. Hip minimizer. Sits above waist. 13" length. Nylon/spandex. 12-34 ~~\$49.99~~ **\$19.99\***
- H. SWIM BOY SHORT 2565-01111-0645** Sits at natural waist. 5" inseam. Chlorine-resistant Xtra Life™ Lycra® spandex. Sizes 14-44 ~~\$49.99~~ **\$19.99\***

**A. HANDKERCHIEF-HEM SWIM DRESS 2563-05958-0645**

Twist-tie bodice. Power-mesh lined brief for tummy control. A-line silhouette. 34" at longest length. Nylon/spandex.

Sizes 8-34 ~~\$110.99~~ **\$44.99**



**B. OFF-THE-SHOULDER COVER-UP 2562-02050-0645**

This versatile coverup goes from pool to beach and beyond, complete with pretty embroidery at the chest and hem. Elbow-length sleeves. 38" length. Rayon.

Sizes 14/16-38/40 ~~\$99.99~~ **\$39.99\***



**C. MESH-TRIM SWIM DRESS 2563-19462-0645**

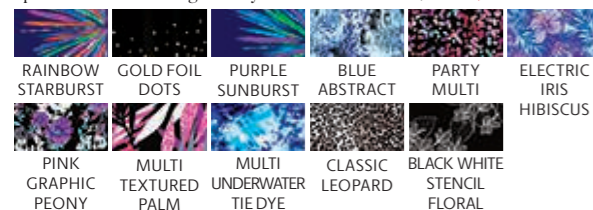
Sweetheart neckline, princess seams. Fit-and-flare silhouette. Power-mesh lining for tummy control. 32" length. Nylon/spandex.

Sizes 8-34 ~~\$110.99~~ **\$44.99\***



**D. SHORT-SLEEVE SWIM TUNIC 2564-19508-0645**

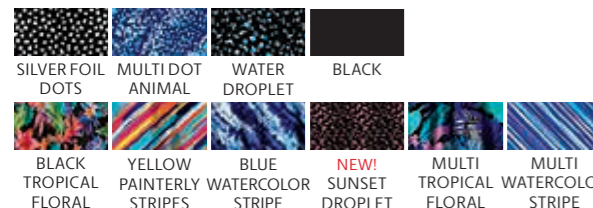
Split neckline. 33" length. Poly/creora®. Sizes 8-44 ~~\$84.99~~ **\$34.99\***



**E. LONGER LENGTH DRAPE-FRONT TANKINI TOP 2564-02007-0645**

V-neck, mesh overlay and a handkerchief hem. Adjustable straps with racerback design. Shelf bra. 52" length. Nylon/spandex.

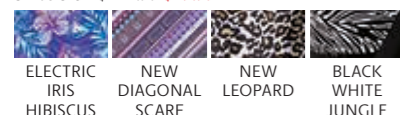
Sizes 14-44 ~~\$105.99~~ **\$42.99\***



**F. TIE FRONT UNDERWIRE SWIMDRESS 2563-05796-0645**

Underwire bra with removable foam cups. Adjustable straps. Functional tie-front. Power-mesh front lining. Attached brief. 25.5" length. Nylon/spandex.

Sizes 8-34 ~~\$124.99~~ **\$49.99\***



A. ISLAND BRIGHT TROPICAL



B. BLACK MULTI



C. BLACK



D. ELECTRIC IRIS HIBISCUS



E. SUNSET DROPLET



F. NEW DIAGONAL SCARF



G. OASIS FLORAL



Swimwear UP TO **60% off**

H. BLACK TROPICAL FLORAL



lightweight fabric



J. BLUE ABSTRACT

separate brief



# look your best BESTSELLERS

**G. SHARKTAIL BEACH COVER UP 2562-19580-0645**

Chic beach cover up with an uneven sharktail hem doubles as an easy-breezy dress! 45" at longest point. Cotton/polyester. Machine washable. Sizes 14/16-34/36 ~~\$59.99~~ **\$24.99\***



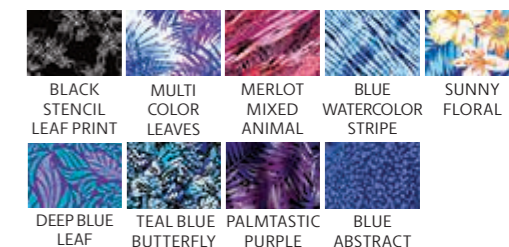
**H. TWIST-FRONT SWIM DRESS 2563-19458-0645**

V-neck, A-line silhouette. Adjustable straps. Full inside body with power-mesh lining for tummy control. Foam cup bra. 32" length. Nylon/spandex. Sizes 8-34 ~~\$110.99~~ **\$44.99\***



**J. DOUBLE LOOP TWO-PIECE SWIMDRESS 2563-02099-0645**

Sewn-in bra and separate brief. Double loop straps. 32" length. Nylon/spandex. Sizes 8-40 ~~\$120.99~~ **\$48.99\***



\*Red prices reflect discount. All hand washable, unless otherwise specified, imported.

Last Chance!

SALE SALE SALE SALE! UP TO 60% OFF

WHILE SUPPLIES LAST



**A. SHORT SLEEVE A-LINE KNIT DRESS**  
 2505-40999-0645  
 Rayon/Spandex Jersey.  
 10/12-38/40  
 Solid: ~~\$51.90~~ **\$26.90\***  
 Print: ~~\$56.90~~ **\$31.90\***

All machine washable, imported.



**B. LONG KNIT SKIRT**  
 2525-40999-0645  
 Rayon/Spandex Jersey.  
 10/12-42/44  
 Solid: ~~\$51.90~~ **\$26.90\***  
 Print: ~~\$56.90~~ **\$31.90\***



**A. NAVY PRINT**  
**RUBY RED WHITE PRINT**  
**GREEN MULTI FERN**  
**BLACK LEAF PRINT**  
**BLACK FLORAL**



**B. BLACK WHITE FLORAL**  
**BLACK**  
**BLACK TROPICAL PRINT**



**C. BLACK WHITE PRINT**  
**PEPPER YELLOW**  
**BLACK WHITE PRINT**  
**BLACK FLORAL**



**D. TROPICAL RASPBERRY PRINT**  
**BLACK**  
**BLUEBERRY**  
**NAVY FLORAL PRINT**  
**VIVID RED**  
**BLACK WHITE PRINT**  
**RUBY RED PRINT**



**C. SMOCKED BODICE DRESS**  
 2505-40961-0645  
 Cotton/Rayon Jersey.  
 10/12-38/40  
 Solid: ~~\$62.90~~ **\$32.90\***  
 Print: ~~\$67.90~~ **\$37.90\***



**D. CROSSOVER BACK TANK DRESS**  
 2505-08091-0645  
 Rayon Jersey.  
 10/12-38/40  
 Solid: ~~\$41.90~~ **\$19.90\***  
 Print: ~~\$46.90~~ **\$24.90\***



**E. A-LINE KNIT TANK DRESS**  
 2505-39882-0645  
 Rayon/Spandex Jersey.  
 10/12-42/44  
 Solid: ~~\$39.90~~ **\$17.90\***  
 Print: ~~\$45.90~~ **\$22.90\***



**F. KNIT DRAWSTRING DRESS**  
 2505-05953-0645  
 Cotton Slub Jersey.  
 10/12-38/40  
 Solid: ~~\$41.90~~ **\$21.90\***  
 Stripe: ~~\$46.90~~ **\$26.90\***



**E. BLACK**  
**BLUE WHITE PRINT**  
**NAVY RED DITSY FLORAL**  
**PRETTY EMERALD FLORAL**  
**ROYAL PERIWINKLE FLORAL**  
**BLACK GREY PRINT**  
**BLUE GREEN FERN PRINT**  
**TROPICAL RASPBERRY**



**F. EXOTIC PEACOCK STRIPE**  
**TROPICAL AQUA**  
**BURNT OLIVE**  
**BLACK WHITE STRIPE**  
**BOYSENBERRY WHITE STRIPE**  
**NAVY WHITE STRIPE**  
**HOT RED**  
**G. PERIWINKLE RASPBERRY FLORAL**  
**BLUE SKY WHITE PRINT**  
**CORNFLOWER BLUE**  
**H. BLACK**  
**FIG**  
**NAVY**  
**OLIVE GREY**



**G. SHORT SLEEVE TIERED MAXI DRESS**  
 2505-48935-0645  
 Rayon/Spandex Jersey.  
 10/12-34/36  
 Solid: ~~\$73.90~~ **\$37.90\***



**H. A-LINE TEE DRESS**  
 2505-08943-0645  
 Cotton/Spandex Jersey.  
 10/12-42/44  
 Solid: ~~\$51.90~~ **\$24.90\***

Last Chance!

# SALE SALE SALE SALE! UP TO 60% OFF

WHILE SUPPLIES LAST

**A. BUTTON FRONT A-LINE MIDI DRESS**  
2505-21948-0645  
Rayon Twill.  
10-34 ~~\$73.90~~ **\$36.90\***



WHITE

**B. LACE TRIM LONG SKIRT**  
2549-09714-0645  
Cotton Gauze.  
10/12-42/44  
~~\$68.90~~ **\$34.90\***



WHITE

**C. V-NECK SHIFT DRESS**  
2505-15601-0645  
Linen/Rayon.  
10/12-34/36  
~~\$89.90~~ **\$44.90\***



**D. PLAYA SHIFT DRESS**  
2505-08142-0645  
Cotton Crinkle Gauze.  
10/12-34/36  
~~\$73.90~~ **\$36.90\***



**E. V-NECK KNIT DRESS WITH DIAGONAL RUFFLE**  
2505-45915-0645  
Polyester/Spandex Textured Knit.  
10/12-34/36  
~~\$99.90~~ **\$39.90\***



**F. MIDI SHIRTDRESS WITH PLEATED SKIRT**  
2505-04855-0645  
Polyester Georgette.  
10-34 ~~\$94.90~~ **\$37.90\***



**G. ZIP TOP STRAW BAG**  
2540-42539-0645  
Paper. Spot Clean.  
~~\$56.90~~ **\$27.90\***



NATURAL



NAVY STRIPE



A. WHITE



B. WHITE

NOW 34.90

up to size 42/44!



H. NAVY PALM PRINT



C. OLIVE YELLOW FLORAL



D. NAVY



E. BLACK IVORY PRINT



F. STONE BLACK PRINT

NOW 60% off

pleated skirt



K. BLUEBERRY

up to size 38!

NOW 26.90

H. NAVY PALM PRINT

BLACK MULTI LEAF PRINT

K. BLACK

BLUEBERRY

BERRY RED

**H. SLEEVELESS SHIFT DRESS** 2505-40980-0645  
Woven Rayon.  
10/12-38/40 ~~\$45.90~~ **\$27.90\***

**J. FLUTTER SLEEVE SURPLICE KNIT ROMPER**  
Rayon. Inseam 7".  
10/12-34/36 ~~\$56.90~~ **\$29.90\***

**K. LACE INSET TRAPEZE DRESS**  
2505-08092-0645  
Rayon Crepe.  
10-38 ~~\$57.90~~ **\$26.90\***

**L. GAUZE MAXI DRESS**  
2505-37547-0645  
Cotton Gauze.  
10/12-38/40 ~~\$72.90~~ **\$34.90\***



J. GREEN MULTI FERN



J. FRESH POMEGRANATE PRINT



DEEP EMERALD

FIG



J. BLACK



L. DEEP EMERALD

elastic smocking!

up to size 38/40!

Last Chance!

SALE SALE SALE

SALE! UP TO 60% OFF

WHILE SUPPLIES LAST

**A. KNOT-SLEEVE TUNIC** 2507-09127-0645  
Rayon Jersey.  
10/12-42/44 ~~\$58.90~~ \$29.90\*



BLACK WHITE PRINT PINK FROST FLORAL

**B. V-NECK POINTED FRONT TANK** 2507-05715-0645  
Rayon/Spandex Jersey.  
10/12-38/40 ~~\$39.90~~ \$17.90\*

**C. 3/4 SLEEVE KNIT TUNIC** 2507-13401-0645  
Cotton/Rayon/Spandex Jersey. 10/12-42/44  
~~\$56.90~~ \$29.90\*



BLACK BLUEBERRY CREAM RASPBERRY SORBET AQUA SKY MISTY ROSE WHITE ANTIQUE MINT PRETTY LAVENDER

**D. FRENCH TERRY TUNIC DRESS** 2507-37512-0645  
Cotton/Polyester Baby French Terry.  
10/12-42/44 ~~\$56.90~~ \$24.90\*

**E. SCREENPRINT V-NECK TEE** 2507-04605-0645  
Cotton/Polyester Jersey.  
10/12-38/40 ~~\$39.90~~ \$19.90\*

**F. PUFF SLEEVE TEE** 2507-17540-0645  
Cotton Jersey. 10/12-34/36  
Solid: ~~\$45.90~~ \$21.90\*  
Print: ~~\$51.90~~ \$26.90\*



MIDNIGHT BERRY NAVY

**G. A-LINE TANK** 2507-40998-0645  
Cotton/Rayon/Spandex Jersey.  
10/12-38/40 ~~\$28.90~~ \$14.90\*

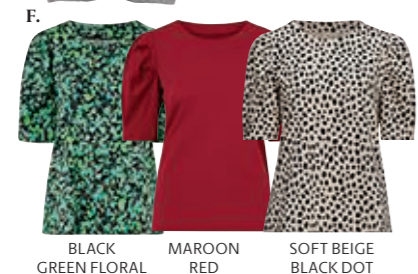
**H. FLOWY SHORTS** 2525-21249-0645  
Rayon Jersey.  
Inseam 8". 10/12-38/40  
Solid: ~~\$42.90~~ \$19.90\*  
Print: ~~\$47.90~~ \$24.90\*



MEDIUM HEATHER GREY HEATHER GREY SCREEN

**J. DISTRESSED SKINNY JEANS** 2549-04489-0645  
Cotton/Polyester/Spandex Denim.  
10-28 ~~\$79.90~~ \$31.90\*

**K. BOYFRIEND JEANS** 2549-37522-0645  
Cotton/Spandex Denim.  
10-38 ~~\$79.90~~ \$31.90\*



BLACK GREEN FLORAL MAROON RED SOFT BEIGE BLACK DOT

All machine washable, imported.



A. PINK FROST FLORAL



B. MISTY ROSE

NOW 17.90



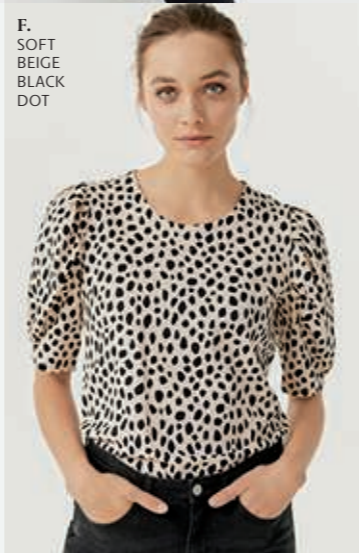
C. MIDNIGHT BERRY



D. MEDIUM HEATHER GREY



E. HEATHER GREY SCREEN



F. SOFT BEIGE BLACK DOT



G. BLACK H. KELLY GREEN



I. BLACK TROPICAL PRINT J. NAVY



K. BLACK L. BLACK WHITE FERN



M. MEDIUM STONEWASH N. DISTRESSED



G. BLACK H. BLACK WHITE FERN



L. BLACK IVORY SNAKE



J. MEDIUM STONEWASH



M. CAMOUFLAGE



K. DISTRESSED



N. ANIMAL HEATHER

FROM 14.90

NOW 31.90

FROM 13.90



O. BLACK WHITE PRINT P. BLACK IVORY SNAKE Q. CAMOUFLAGE



R. PLAID S. ANIMAL HEATHER T. CAMOUFLAGE



U. BLACK REPTILE V. ANIMAL HEATHER W. BLACK WHITE PRINT

**L. STRETCH KNIT BIKE SHORTS** 2525-09955-0645  
Cotton/Spandex Jersey.  
Inseam 8".  
10/12-42/44 ~~\$34.90~~ \$15.90\*

**M. STRETCH CAPRI LEGGINGS** 2525-43183-0645  
Cotton/Spandex Jersey.  
10/12-42/44 ~~\$37.90~~ \$15.90\*

**N. STRETCH KNIT LEGGINGS** 2525-37498-0645  
Cotton/Spandex Jersey.  
10/12-42/44 ~~\$39.90~~ \$17.90\*

\*Red prices reflect discount.

Last Chance!

SALE SALE SALE

SALE! UP TO 60% OFF

WHILE SUPPLIES LAST

A. PRINT CAP SLEEVE TEE

2507-20138-0645  
Rayon Jersey.  
10/12-38/40  
\$59.90 \$17.90\*



A. BLACK TROPICAL PRINT

B. OLIVE GREY

utility pockets

FROM 17.90

back pockets

elastic waistband

C., D. BLACK PINK FROST FLORAL



elastic waistband

utility pockets

back pockets

A. BLACK TROPICAL PRINT

RUBY BERRY FERN PRINT



BLACK WHITE DAISY PRINT

B. BLACK

WHITE

OLIVE GREY

BLACK PINK FROST FLORAL

BLACK LEAF PRINT

BLACK LEAF PRINT

BLACK LEAF PRINT

BLACK LEAF PRINT

BLACK LEAF PRINT

BLACK LEAF PRINT

BLACK LEAF PRINT

BLACK LEAF PRINT

BLACK LEAF PRINT

BLACK LEAF PRINT

BLACK LEAF PRINT

E. SWEET CORAL



BLACK

HOT RED

CORNFLOWER BLUE

MEDIUM BLUE DISTRESSED

BLEACH DISTRESSED

BLACK LEAF PRINT

BLACK

BLACK/IVORY PRINT

BLACK LEAF PRINT

BLACK LEAF PRINT

BLACK LEAF PRINT

BLACK LEAF PRINT

BLACK LEAF PRINT

BLACK LEAF PRINT

BLACK LEAF PRINT

BLACK LEAF PRINT

BLACK LEAF PRINT

BLACK LEAF PRINT

BLACK LEAF PRINT

C. INVERTED FRONT PLEAT V-NECK KNIT TANK

2507-18399-0645  
Rayon/Spandex Jersey.  
10/12-34/36  
\$39.90 \$17.90\*

D. SOFT KNIT SHORTS WITH POCKETS

2525-18604-0645  
Rayon/Spandex Jersey. Inseam 6".  
10/12-34/36  
\$45.90 \$21.90\*

E. CROCHET LACE TANK

2507-42921-0645  
Cotton Jersey.  
10/12-38/40  
\$42.90 \$22.90\*

F. CUFF HEM SHORTS

2549-08240-0645  
Cotton/Spandex Denim. Inseam 5".  
10-38  
\$68.90 \$34.90\*

H. TIE FRONT KNIT CAPRI

2525-18647-0645  
Rayon/Spandex Jersey. 10/12-34/36  
Solid: \$51.90 \$21.90\*  
Print: \$56.90 \$26.90\*

G. V-NECK TOP WITH FRONT TIE

2507-18401-0645  
Rayon/Spandex Jersey.  
10/12-34/36 \$45.90 \$21.90\*

H. TIE FRONT KNIT CAPRI

2525-18647-0645  
Rayon/Spandex Jersey. 10/12-34/36  
Solid: \$51.90 \$21.90\*  
Print: \$56.90 \$26.90\*

G. V-NECK TOP WITH FRONT TIE

2507-18401-0645  
Rayon/Spandex Jersey.  
10/12-34/36 \$45.90 \$21.90\*

H. TIE FRONT KNIT CAPRI

2525-18647-0645  
Rayon/Spandex Jersey. 10/12-34/36  
Solid: \$51.90 \$21.90\*  
Print: \$56.90 \$26.90\*

G. V-NECK TOP WITH FRONT TIE

2507-18401-0645  
Rayon/Spandex Jersey.  
10/12-34/36 \$45.90 \$21.90\*



up to size 38/40!



G., H. BLACK LEAF PRINT

\*Red prices reflect discount. All machine washable, imported.

J. SIDE SLIT A-LINE TUNIC

2507-24670-0645  
Rayon Jersey.  
10/12-38/40  
\$51.90 \$26.90\*



K. TIE WRAP RIBBED CARDIGAN

2556-06896-0645  
Polyester/Elastic.  
10/12-34/36  
\$69.90 \$34.90\*

L. FLUTTER SLEEVE MOCK NECK TEE

2507-04756-0645  
Rayon/Spandex Crepe.  
10/12-34/36  
\$49.90 \$21.90\*

M. SHIRRED SCOOP NECK TUNIC

2507-05740-0645  
Rayon Jersey.  
10/12-34/36  
\$47.90 \$23.90\*

N. LOVE ELLOS TANK

2507-08026-0645  
Rayon/Spandex Jersey.  
10/12-34/36  
\$37.90 \$17.90\*

P. SATIN-FRONT TEE

2507-14716-0645  
Polyester Satin front. Rayon Jersey Knit back.  
10/12-38/40  
\$56.90 \$27.90\*

P. AQUATIC GREEN FLORAL

PLUM BLUE BIRD

AQUATIC GREEN FLORAL

PLUM BLUE BIRD

AQUATIC GREEN FLORAL

PLUM BLUE BIRD

J. SIDE SLIT A-LINE TUNIC

2507-24670-0645  
Rayon Jersey.  
10/12-38/40  
\$51.90 \$26.90\*



K. TIE WRAP RIBBED CARDIGAN

2556-06896-0645  
Polyester/Elastic.  
10/12-34/36  
\$69.90 \$34.90\*

L. FLUTTER SLEEVE MOCK NECK TEE

2507-04756-0645  
Rayon/Spandex Crepe.  
10/12-34/36  
\$49.90 \$21.90\*

M. SHIRRED SCOOP NECK TUNIC

2507-05740-0645  
Rayon Jersey.  
10/12-34/36  
\$47.90 \$23.90\*

N. LOVE ELLOS TANK

2507-08026-0645  
Rayon/Spandex Jersey.  
10/12-34/36  
\$37.90 \$17.90\*

P. SATIN-FRONT TEE

2507-14716-0645  
Polyester Satin front. Rayon Jersey Knit back.  
10/12-38/40  
\$56.90 \$27.90\*

P. AQUATIC GREEN FLORAL

PLUM BLUE BIRD

AQUATIC GREEN FLORAL

PLUM BLUE BIRD

AQUATIC GREEN FLORAL

PLUM BLUE BIRD



up to size 38/40!  
high side slit



NOW 21.90



N. NAVY HEART

FROM 17.90



J. BLACK BEIGE FLORAL

K. LAVENDER



L. SWEET CORAL

M. BLACK CREAM PRINT



P. AQUATIC GREEN FLORAL

up to size 38/40!

Last Chance!

SALE SALE SALE

SALE! UP TO 60% OFF

WHILE SUPPLIES LAST



SAVE \$33

A. WHITE



Stretch Twill Capri



C. EMBROIDERED GAUZE BLOUSE 2530-08413-0645 Cotton Gauze. 10-28 \$63.90 \$29.90\*

D. TIE-DYE GAUZE TUNIC 2530-09474-0645 Cotton Gauze. 10/12-42/44 \$73.90 \$36.90\*

E. STRETCH TWILL CAPRIS 2549-23451-0645 Cotton/Spandex Twill. Inseam 21". 10-34 \$68.90 \$32.90\*



NOW 29.90

C. WHITE



A. SHEER LACE TRIM KIMONO CARDIGAN 2532-09662-0645 Polyester Crinkle Chiffon. 10/12-34/36 \$67.90 \$34.90\*

B. SNAP FRONT DENIM TUNIC 2530-37517-0645 Cotton Denim. 10/12-42/44 \$73.90 \$36.90\*

Shorts Pg. 56



B. INDIGO

up to size 42/44!



D. NAVY WHITE TIE DYE

up to size 42/44!

Bag -> Pg. 52



F. SWEET CORAL

NOW 19.90



F. SWEET CORAL



G. WHITE

G. LINEN-BLEND TIE FRONT BLOUSE 2530-03610-0645 Linen/Rayon. 10/12-34/36 \$62.90 \$31.90\*



G. WHITE



H. WHITE BLUE PRINT

J. WHITE

FROM 22.90

up to size 38/40!

H. KEYHOLE NECK PEASANT BLOUSE 2530-41610-0645 Cotton Cambric. 10/12-38/40 \$51.90 \$22.90\*

J. BUTTON FRONT DENIM BERMUDA SHORTS 2549-39876-0645 Cotton/Polyester/Spandex Denim. Inseam 11". 10-38 \$73.90 \$34.90\*



H. NAVY/WHITE PRINT

WHITE BLUE PRINT

TROPICAL RASPBERRY/WHITE PRINT

WHITE TROPICAL JADE PRINT



Bermuda

J. BLACK

WHITE

LIGHT STONEWASH



K. WHITE

up to size 42/44!



up to size 38!

L. BLACK FLORAL PRINT



K. WHITE

BLACK

BLACK FLORAL PRINT



L. BLACK FLORAL PRINT

PERIWINKLE MIST FLORAL



NOW 29.90

M. RICH JADE

wear rolled or unrolled ->



M. RICH JADE

WHITE

K. CROCHET TRIM BLOUSE 2530-13662-0645 Cotton Crepe. 10/12-42/44 \$79.90 \$39.90\*

L. TIE-SLEEVE TUNIC 2530-13218-0645 Woven Rayon. 10-38 \$67.90 \$32.90\*

M. BUTTON-FRONT BLOUSE 2530-05566-0645 Rayon Twill. 10-28 \$62.90 \$29.90\*

All machine washable, imported.

\*Red prices reflect discount.

A. BACK-CLOSE NEW COLOR! BERRY



SAVE UP TO \$21

C. WIRELESS NEW COLOR! IVORY FLORAL



E. BACK-CLOSE NEW! SPARROW BROWN



G. WIRELESS BLACK MULTI BLOSSOM

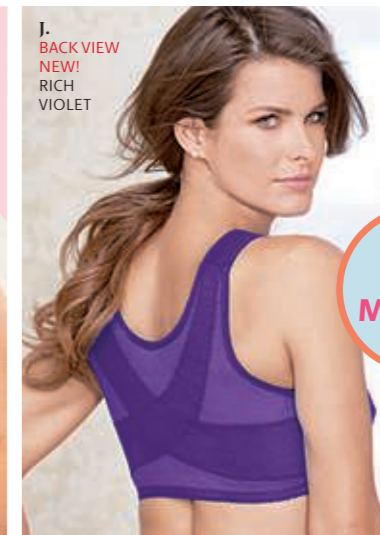


H. FRONT-CLOSE OCEAN TEAL FLORAL EMBROIDERY



as seen on OPRAHmag.com

J. BACK VIEW NEW! RICH VIOLET



OVER 1 MILLION SOLD



B. FRONT-CLOSE BEIGE

A.-B.

BEIGE (A,B)

WHITE (A,B)

SOFT GRAY (A)

BLACK (A)

PINK (B)

BURGUNDY (A)

NAVY (A)

DARK TEAL (A)

GLACIER (A)

BERRY (A,B)

Exclusive Color!

**THE MAGIC LIFT® BRA**

Unique designs that lift, support and separate without wires and eliminate shoulder strain for all-day comfort.



Glamorise® MagicLift®

A.-B. GLAMORISE® MAGIC LIFT® BRAS  
All with cross-under-and-over band for maximum lift, support and separation. Nylon/poly/elastane.  
**A. BACK-CLOSE SUPPORT WIRELESS BRA 2527-23754-0645**  
Berry not available in Band size 36 or I&J cups.  
Sizes 36-56 B-C **\$54.99 \$36.99\***  
Sizes 36-56 D-DD, F-J **\$64.99 \$43.99\***  
**B. FRONT-CLOSE SUPPORT WIRELESS BRA 2527-23753-0645**  
Berry is not available in 52B, Band Size 58 or I Cup.  
Sizes 38-52 B; 38-58 C **\$54.99 \$36.99\***  
Sizes 38-58 D-DD; F-I **\$64.99 \$43.99\***



D. UNDERWIRE FRENCH BLUE BATIK FLORAL

C.-D.

NEW! IVORY FLORAL

FRENCH BLUE BATIK FLORAL



**comfortchoice® T-SHIRT BRA**  
A smooth, seamless design for all-day comfort.  
Lightly lined for natural shape  
Soft, stretchy fit  
Adjustable straps

All hand washable, Imported.  
\*Red prices reflect discount.



F. FRONT-CLOSE WHITE

E.-F.

BLACK

WHITE

LIGHT BEIGE

PRETTY BLUSH

ZEN BLUE

SAILOR BLUE

TOFFEE

PLUM MAJESTIC

SIGNATURE BERRY

NEW! SPARROW BROWN



**FROM 36.99**

E.-F. PLAYTEX® 18 HOUR® WIRELESS BRAS  
Adjustable cushioned straps. Lightly-padded bottom band and smoothing sides and back.  
**E. ULTIMATE SHOULDER COMFORT BRA 2527-22799-0645**  
Poly/Spandex rubber®/nylon/cotton/spandex. Pretty Blush, Zen Blue, Sailor Blue, Plum Majestic, Signature Berry and Sparrow Brown available in: 38-42 B, 38-44 C, D & 38-46 DD, DDD. H cup only available in Black, White and Light Beige.  
Sizes 38-48 B; 38-54 C **\$54.99 \$36.99\***  
Sizes 38-54 D-DDD; 38-46 G-H **\$64.99 \$43.99\***  
**F. FRONT-CLOSE WITH FLEX BACK BRA 2527-35417-0645**  
Only in White. Natural rubber latex/poly/cotton/spandex.  
Sizes 36-46 C **\$54.99 \$36.99\***  
Sizes 36-48 D-DD; 38-44 DDD **\$64.99 \$43.99\***

**FROM 29.99**

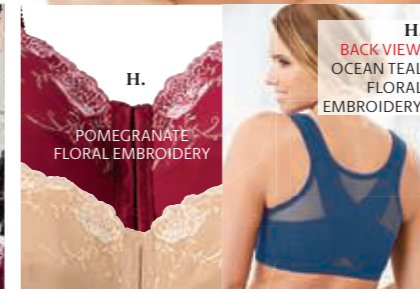
now in cup size A!

**CATHERINES ALL-DAY COMFORT BRA**

A wire-free fit is the softest solution to comfort



**G. CATHERINES NO-WIRE COTTON COMFORT BRA WITH LACE 2527-33545-0645**  
Soft, supportive cups conform to your shape without the need for a wire. Pretty lace detail for a feminine touch. Cotton/spandex.  
Sizes 38-54 A-C **\$46.95 \$29.99\***  
Sizes 38-54 D-DDD, G **\$56.95 \$36.99\***  
**H. COMFORT CHOICE® EMBROIDERED POSTURE BRA 2527-18799-0645**  
Cushioned, adjustable straps. Nylon/spandex.  
Sizes 38-54 B-C **\$49.99 \$36.99\***  
Sizes 38-54 D-DDD,G **\$59.99 \$43.99\***



H. BACK VIEW OCEAN TEAL FLORAL EMBROIDERY

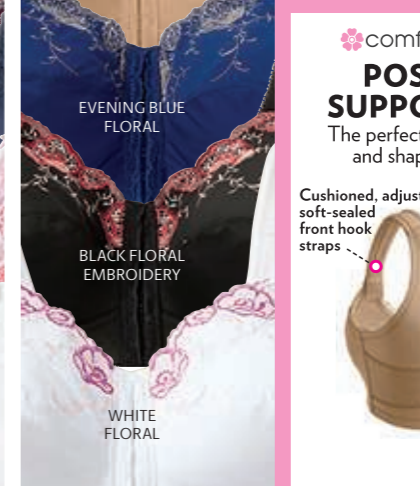
POMEGRANATE FLORAL EMBROIDERY

NUDE

EVENING BLUE FLORAL

BLACK FLORAL EMBROIDERY

WHITE FLORAL



**comfortchoice® POSTURE SUPPORT BRA**  
The perfect bra to support and shape your back  
Cushioned, adjustable soft-sealed front hook straps  
Extra power-mesh crisscross back for full posture support



J. FRONT VIEW RICH VIOLET

J.

WHITE

NUDE

PINK BURST LACE

FRENCH BLUE LACE

NEW! RICH VIOLET

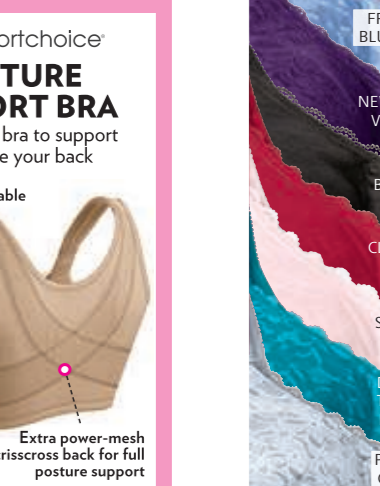
BLACK

CLASSIC RED

SHELL PINK

DARK TURQ LACE

PEARL GREY LACE



**J. COMFORT CHOICE® LACE POSTURE BRA 2527-10620-0645**  
Smooth soft-seal straps. Nylon/spandex.  
Sizes 38-54 B-C **\$46.99 \$34.99\***  
Sizes 38-54 D-DDD,G **\$56.99 \$41.99\***

*the* **SMART BRAS**  
Comfort and support innovations from  
Comfort Choice, Glamorise, Playtex and Catherines.  
**FROM 29.99**

**comfortchoice®**  
**WIRELESS COTTON BACK-CLOSE BRA**  
 Soft support for all day comfort

Wireless double-lined cups  
 Supportive seaming for natural shape  
 Breathable cotton



A. FRONT-CLOSE NEW! BRIGHT PURPLE ROSES  
 H. CHEVRON FLORAL PACK

FROM 9.99

Leisure

A.-B. BACK-CLOSE BRA  
 BLACK, NUDE, WHITE, RASPBERRY SORBET ROSES, SHELL PINK, HEATHER GREY, EVENING BLUE, SPRING PLAID

B. BACK-CLOSE SHELL PINK

60% OFF!  
 CLASSIC RED

60% OFF!  
 SKY BLUE ZEBRA

NEW! BRIGHT PURPLE ROSES

SWEET CORAL PALMS

**A.-B. COMFORT CHOICE® COLLECTION COTTON WIRELESS BRAS**  
 Full coverage. Double-lined cups designed to offer light lift and support without a wire. Adjustable straps. Cotton.

**A. BACK-CLOSE BRA 2527-12697-0645**

**B. FRONT-CLOSE BRA 2527-57525-0645**

Other Colors:  
 Sizes 38-54 B-C **\$24.99 \$16.99\***  
 Sizes 38-54 D-DDD,G **\$34.99 \$23.99\***  
 Classic Red or Sky Blue Zebra:  
 Sizes 38-54 B-C **\$24.99 \$9.99\***  
 Sizes 38-54 D-DDD,G **\$34.99 \$13.99\***

**C. COMFORT CHOICE® GEL STRAP WIRELESS BRA 2527-16614-0645**

Extra-wide straps with lightweight silicone gel to relieve shoulder stress. Front closure. Nylon/spandex tricot knit.  
 Sizes 38-54 B-C **\$49.99 \$34.99\***  
 Sizes 38-54 D-DDD,G **\$59.99 \$41.99\***

**D. COMFORT CHOICE® LACE MINIMIZER BRA 2527-50195-0645**  
 Full figure minimizer bra reduces bust size by one cup. Wire-free support. Adjustable comfort straps. Lace detail. Nylon.  
 Sizes 38-50 B,C **\$49.99 \$34.99\***  
 Sizes 38-50 D,DD,DDD **\$59.99 \$41.99\***

**E. COMFORT CHOICE® UNDERWIRE PETAL BOOST® BRA 2527-20555-0645**

Waffle knit, cotton-lined seamless cups. Heat-embossed flower lift panels. Wide padded straps. Tagfree. Terry lining. Back closure. Nylon/spandex.  
 Sizes 38-54 B-C **\$49.99 \$34.99\***  
 Sizes 38-54 D-DDD **\$59.99 \$41.99\***

\*Red prices reflect discount.  
 All bras are hand washable.  
 All panties are machine washable.  
 All Imported.

C. FRONT-CLOSE NEW COLOR! AQUATIC GREEN

NUDE, WHITE, SHELL PINK, SWEET CORAL, EVENING BLUE, BLACK

Gel Strap

D. WIRELESS PEONY PETAL

BEFORE AFTER

PEONY PETAL, WHITE

Minimizer

E. BACK-CLOSE NEW COLOR! SKY BLUE

NUDE, WHITE, SHELL PINK, RASPBERRY, BLACK

built in petals offer lift & support

Petal Boost

F: COTTON BRIEF 5-PACKS

OVER 30 MILLION SOLD

DRAGONFLY PACK, NEW! TROPICAL PALM PACK, LOVE PACK, DITSY PACK, NEW! FALL HARVEST PACK

comfortchoice® ...MADE TO BE BEAUTIFUL®

F-G. COMFORT CHOICE® COTTON BRIEF Full-cut panty sits at the waist. Elastic Comfort Choice® jacquard logo waistband. Not in Flower Pack. Also in White Pack. Tagfree. Cotton.

F. COTTON BRIEF 5-PACK 2514-10012-0645 One size and color per pack. Not in Nude Black Pack. Sizes 7-16 **\$44.99 \$34.99\***

G. COTTON BRIEF 10-PACK 2514-04262-0645 One size and two of each color per pack. Sizes 7-16 **\$69.99 \$49.99\***

GARDEN PLAID PACK, PAISLEY PACK, PINEAPPLE PACK, MOSAIC PACK, NEW! CHEVRON FLORAL PACK

FROM 4.99 PER PANTY IN 10-PACK

H: COMFORT WAISTBAND BRIEF 2-PACKS

FALL PACK, NEW! PINK PACK, BASIC PACK

H. FALL PACK, H. BASIC PACK

NO PILLING, BUNCHING OR ROLLING

FULL COVERAGE SPANDEX BRIEF

F-G: COTTON J-K: NYLON 5 & 10-PACKS

NUDE BLACK PACK, BASIC PACK, NEW! FLOWER PACK, PASTEL PACK, BRIGHT PACK

L: HI-CUT PANTY 5-PACKS

EVENING BLUE DOT PACK, FALLING FLORAL PACK, BRIGHT PACK, BASIC PACK, STAR NIGHT PACK

THIGH FLATTERING ELONGATING LOOK

L. HI-CUT PANTY STAR NIGHT PACK

**PANTY SIZE CHART**

Hips 40"-43"..... 7	Hips 48"-51"..... 9	Hips 56"-59"..... 11	Hips 64"-67"..... 13	Hips 72"-75"..... 15
Hips 44"-47"..... 8	Hips 52"-55"..... 10	Hips 60"-63"..... 12	Hips 68"-71"..... 14	Hips 76"-77½"..... 16

A. CLASSIC RED



**A. LONG LACE TOP STRETCH KNIT GOWN 2515-08143-0645**

Easy pull over gown with a full sweep Shirring at waist for comfort and dyed-to-match stretch lace bodice. 52" length Poly/spandex. Sizes M-5X Plum Burst & Deep Teal: **\$59.99 \$29.99\*** Other Colors: **\$59.99 \$44.99\***

**B. NEW! AMOUREUSE® BABYDOLL RUFFLE GOWN 2515-20191-0645**

Round ruffle trim neckline with keyhole tie. Double-layer swing body. 26" length. Tricot. Sizes M-5X **\$49.99 \$34.99\***

**C. NEW! SERENADA® LOUNGE SET WITH MESH DETAIL 2515-07296-0645**

Tunic and elastic waist pant set. Tunic has scoop neckline, batwing sleeve, mesh panel detail on sleeve and 27" length. Elastic waist pant has mesh panel detail going down leg and 28" inseam. Rayon/spandex. Sizes M-5X **\$54.99 \$34.99\***

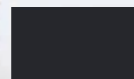
All machine washable, imported.

\*Red prices reflect discount.

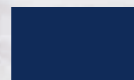
A.-B.



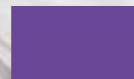
CLASSIC RED (A-B)



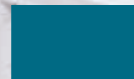
BLACK (A-B)



EVENING BLUE (A)



PLUM BURST (A)



DEEP TEAL (A)



SKY BLUE (B)

SAVE \$30

FROM 34.99



B. BLACK



E. ULTRA BLUE

knee length 42"

FROM 34.99



C. NEW! DUSTY INDIGO

airy mesh at shoulders & pant leg

NEW! PURPLE MAUVE

NEW! DUSTY INDIGO

D. NEW! BLACK MULTI FLORAL



also in petite!

full length 52"

D.-E. DARK BERRY FOLIAGE\* (D-E)

DEEP CLARET (D-E)

POMEGRANATE FLORAL\* (D-E)

NEW! BLACK MULTI FLORAL (D-E)

RICH VIOLET BLOOMING\* (D-E)

ULTRA BLUE (D-E)

BRIGHT COBALT TIE DYE STRIPE (D-E)

DEEP TEAL\* (D-E)

NEUTRAL ANIMAL\* (D-E)

DEEP LAGOON ANIMAL\* (D-E)

BLACK BOUQUET\* (D-E)

BLACK (D-E)

F. AQUAMARINE

HEATHER GREY\*

BLACK\*

PLUM BURST

EVENING BLUE\*

DEEP TEAL

POMEGRANATE



also in petite!

your sleep **STYLE**  
Find your favorites in comfortable, breathable knits!  
FROM 34.99

**D.-E. DREAMS & CO.® COLLECTION T-SHIRT LOUNGERS**

Easy, lightweight comfort. Trapeze silhouette with side slits and side seam pockets. Cotton/poly knit. **D. LONG LOUNGER** Average: 2506-29437-0645 52" length. Sizes M-7X Petite: 2506-29439-0645 48" Length. Colors may vary. Sizes M-5X **\$64.99 \$39.99\***

\*Color available in Petites.

**E. SHORT LOUNGER**

2506-29451-0645 42" length. Sizes M-6X **\$54.99 \$34.99\***

**F. DREAMS & CO.® PANTSET LOUNGER**

Side slits and side seam pockets. Pure cotton. Average: 2506-07825-0645 Top: 30" length; Pants: 28" inseam. Sizes M-5X Petite: 2506-97152-0645 Top: 30" length; Pants: 27" inseam. Colors may vary. Sizes M-5X **\$64.99 \$39.99\***



40" length  
46" length

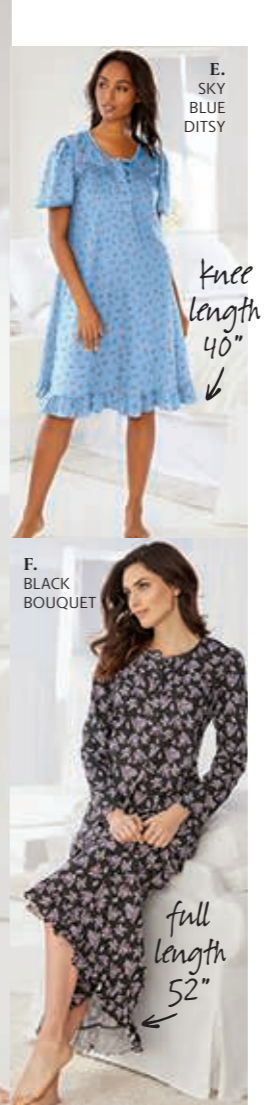


also in petite!



also in petite!

SAVE \$25



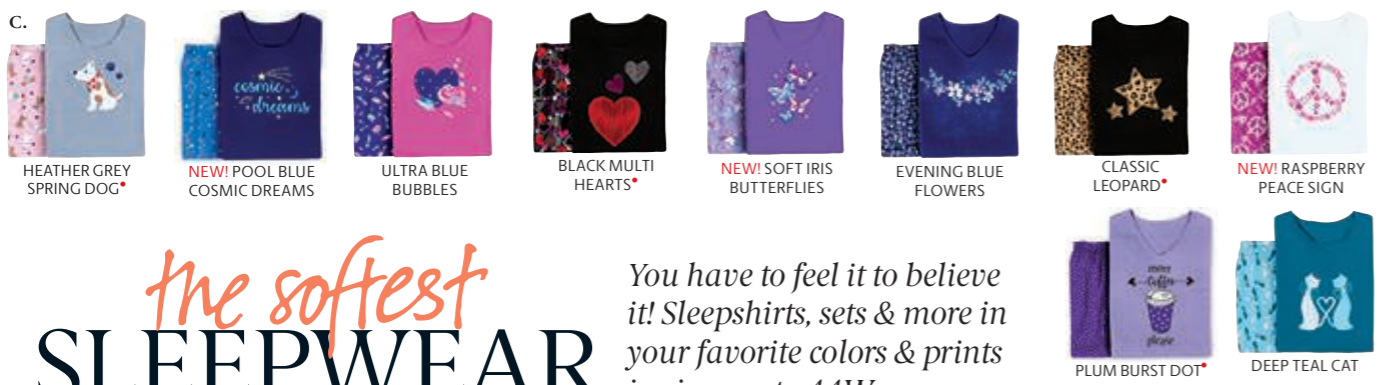
knee length 40"

full length 52"



also in petite!

53" length



HEATHER GREY SPRING DOG\* NEW! POOL BLUE COSMIC DREAMS ULTRA BLUE BUBBLES BLACK MULTI HEARTS\* NEW! SOFT IRIS BUTTERFLIES EVENING BLUE FLOWERS CLASSIC LEOPARD\* NEW! RASPBERRY PEACE SIGN PLUM BURST DOT\* DEEP TEAL CAT

**A.-B. DREAMS & CO.® EASY SLEEPSHIRTS**  
Side slits. Pure cotton. Heather grey: Cotton/poly.  
**A. SHORT EASY SLEEPSHIRT**  
2515-41067-0645 40" length. Sizes M/L-7X/8X \$59.99 \$24.99\*  
**B. LONG EASY SLEEPSHIRT**  
2515-42406-0645 46" length. Sizes M/L-7X/8X \$44.99 \$29.99\*

**C. LONG-SLEEVE KNIT PJ SET**  
Graphic top and matching printed sleep pant. Cotton. Heather grey: Cotton/Poly. Average: 2515-11650-0645  
Top: 28" length. Pant: 28" inseam.

Sizes 14/16-42/44  
Petite: 2515-97150-0645  
Top: 26" length. Pant: 27" inseam. Colors may vary.  
**D.-E. DREAMS & CO.® FLORAL PRINT COTTON GOWNS**  
Lace-trimmed scoop neckline and flutter sleeves. Front pintucks with flower shaped buttons. Pure cotton. Average: 2515-05988-0645  
Top: 28" length. 52" length. Sizes M-6X

Petite: 2515-60384-0645 49" length. Colors may vary. Sizes M-5X \$69.99 \$44.99\*  
**E. SHORT GOWN**  
2515-69244-0645 40" length. Sizes M-5X \$54.99 \$34.99\*  
**F. DREAMS & CO.® LONG-SLEEVE GOWN**  
2515-29719-0645  
Scoopneck with pintucking detail and scalloped trim at neck. 52" length. Cotton jersey knit. Sizes 14/16-38/40 \$64.99 \$44.99\*

**G.-H. NEW COLOR! DREAMS & CO.® FRENCH TERRY ZIP-FRONT ROBES**  
Patch pockets. Cotton/poly.  
**G. LONG ROBE**  
Average: 2506-87695-0645 53" length. Sizes M-6X  
Petite: 2506-85199-0645 48" length. Colors may vary. Sizes M-5X  
Solid. \$64.99 \$49.99\*  
Print. \$69.99 \$54.99\*  
**H. SHORT ROBE**  
2506-07104-0645 39" length. Not in Pink. Sizes M-5X  
Solid. \$49.99 \$34.99\*  
Print. \$54.99 \$39.99\*



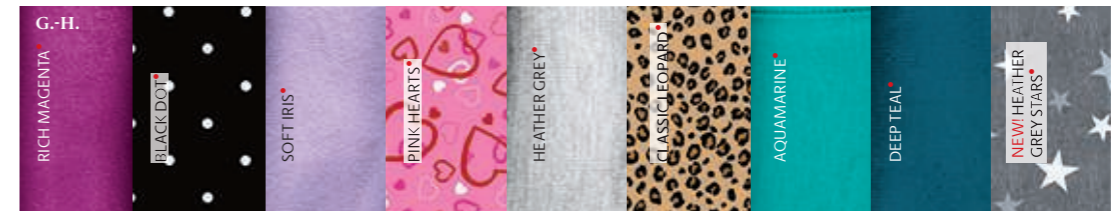
39" length

# the softest SLEEPWEAR

You have to feel it to believe it! Sleepshirts, sets & more in your favorite colors & prints in sizes up to 44W.

FROM 24<sup>99</sup>

\*Red prices reflect discount. All machine washable, imported. Color available in Petites.

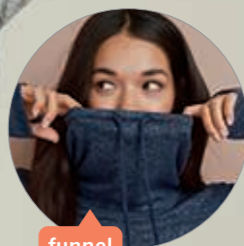




A. MARLED GREY  
B. HEATHER CHARCOAL STAR



MARLED GREY  
MARLED NAVY



funnel neck



hi-low hem with side slits



HEATHER GREY FLORAL  
HEATHER CHARCOAL STAR  
BLACK MULTI FLORAL  
D. BLACK WEEKEND

Sleepshirts FROM 19.90



up to size 38/40!



wear with or without sleep leggings

C. HEATHER GREY GRAPHIC



C. HEATHER GREY GRAPHIC  
NEW! BLACK COFFEE TIME  
SKY BLUE COFFEE CUP  
BLACK WEEKEND  
TROPICAL RASPBERRY CHILL



E. WHITE  
F. HEATHER GREY

up to size 42/44!

up to size 38/40!



E. 3-Pack Tank  
CHILI RED PACK  
NAVY PACK  
HEATHER GREY PACK  
CHILI RED  
NAVY  
HEATHER GREY  
WHITE  
WHITE  
WHITE  
BLACK  
PALE BLUSH  
BLACK



F. BLACK HEATHER GREY

DUSTY PINK



G. WHITE  
H. RED TARTAN PLAID  
NAVY PINK PLAID  
BRIGHT TULIP GREY PLAID  
GREY WHITE PLAID  
NAVY MULTI PLAID  
MIDNIGHT BERRY PLAID

FROM 19.90

up to size 38/40!



G. WHITE  
H. GREY WHITE PLAID

- A. FUNNEL-NECK LOUNGE SWEATSHIRT TUNIC 2506-25700-0645 Rayon/Polyester/Spandex Jersey. 10/12-38/40 \$68.90 \$44.90\*
- B. RIB TRIM SLEEP LEGGINGS 2515-38368-0645 Cotton/Spandex Jersey. 10/12-38/40 \$45.90 \$19.90\*
- C. V-NECK SLEEP SHIRT 2515-35985-0645 Cotton/Spandex Jersey. 10/12-34/36 \$37.90 \$21.90\*
- D. CAP SLEEVE SLEEP SHIRT 2515-04577-0645 Cotton/Spandex Jersey. 10/12-38/40 \$37.90 \$19.90\*

All machine washable, imported. \*Red prices reflect discount.

- E. 3-PACK SLEEVELESS TANK 2507-37531-0645 Cotton Jersey. 10/12-42/44 \$62.90 \$39.90\*
- F. KNIT JOGGER SLEEP PANTS 2515-13277-0645 Cotton/Spandex Jersey. 10/12-38/40 \$42.90 \$22.90\*
- G. SCREEN-PRINT SLEEP TEE 2515-33088-0645 Cotton/Spandex Jersey. 10/12-38/40 \$29.90 \$19.90\*
- H. PLAID FLANNEL SLEEP PANTS 2515-38478-0645 Cotton Flannel. 10/12-38/40 \$45.90 \$24.90\*

# whisper soft ESSENTIALS

On their own or under outfits, these are the lightweight basics you'll reach for everyday.

FROM **17<sup>90</sup>**



Skirt NOW **26<sup>90</sup>**



A. LACE-INSET TANK  
2507-09278-0645  
Polyester/  
Spandex Jersey.  
10/12-38/40  
\$42.90 \$24.90\*

B. KNIT CAMISOLE  
2507-09698-0645  
Cotton/Spandex Jersey.  
10/12-38/40  
\$28.90 \$17.90\*

C. LACE HEM TUNIC TANK  
2507-37495-0645  
Cotton/Spandex Jersey.  
10/12-42/44  
\$45.90 \$24.90\*

D. LACE HEM BIKE SHORTS  
2525-05975-0645  
Cotton/Spandex Jersey.  
10/12-42/44  
\$34.90 \$19.90\*

E. SCALLOP LACE HEM LEGGINGS  
2525-23603-0645  
Cotton/Spandex Jersey.  
10/12-34/36  
\$39.90 \$24.90\*

F. LONG KNIT TANK  
2507-31939-0645  
Rayon/Cotton/  
Spandex Jersey.  
10/12-38/40  
\$54.90 \$19.90\*

G. SCOOP NECK TEE  
2507-09697-0645  
Cotton/Spandex Jersey.  
10/12-38/40  
\$29.90 \$17.90\*

H. LACE TRIM TANK  
2507-15299-0645  
Cotton/Polyester Jersey.  
10/12-42/44  
\$32.90 \$19.90\*

J. THREE-QUARTER SLEEVE SCOOP NECK TEE  
2507-09602-0645  
Cotton/Spandex Jersey.  
10/12-38/40  
Solid: \$34.90 \$19.90\*  
Stripe: \$39.90 \$24.90\*

K. KNIT MAXI SKIRT  
2525-04481-0645  
Cotton/Spandex Jersey.  
10/12-42/44  
\$45.90 \$26.90\*

LIGHT BLACK MEDIUM BLUE  
A. STONEWASH WASH SANDED



LIGHT BLUE WASH DISTRESSED



LIGHT STONEWASH INDIGO

back view



MEDIUM STONEWASH LIGHT STONEWASH INDIGO

C. JEGGING CAPRI 2549-08184-0645  
Cotton/Polyester/Spandex Denim.  
10-38 \$62.90 \$34.90\*

72 1.800.405.3650 | WWW.ELLOS.US

# carpe DENIM

Seize your style with 9 made-for-you fits, multiple colors & washes.

FROM 31.90

## BOYFRIEND JEANS

A. LIGHT STONEWASH

A. BOYFRIEND JEANS

2549-37522-0645

Cotton/Spandex Denim. 10-38

Distressed:

\$79.90 \$31.90\*

Washes:

\$79.90 \$49.90\*

up to size 38!

## 4 POCKET JEGGINGS

B. 4-POCKET STRETCH JEGGINGS

2549-09776-0645

Cotton/Polyester/Spandex Denim.  
10-38 \$67.90 \$39.90\*

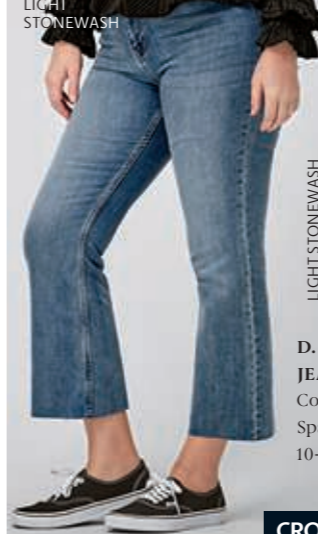
wear rolled or unrolled

UP TO 40% off Everything!

All machine washable, imported.

\*Red prices reflect discount.

D. LIGHT STONEWASH



LIGHT STONEWASH



WHITE

D. CROP BOOTCUT JEANS 2549-08717-0645

Cotton/Polyester/Spandex Denim.

10-34 \$68.90 \$39.90\*

CROP BOOTCUT

FROM 39.90

F. STONEWASH



STONEWASH

F. HIGH-WAIST WIDE LEG JEANS

2549-28722-0645

Cotton/Spandex Denim.

10-34 \$79.90 \$49.90\*

WIDE LEG

E. LIGHT STONEWASH



back view

MEDIUM STONEWASH

LIGHT STONEWASH

E. BACK ELASTIC BOOTCUT JEANS

2549-37468-0645

Cotton/Polyester/Spandex Denim.

10-38 \$68.90 \$42.90\*

BACK ELASTIC BOOTCUT

G. BLACK



BLACK

INDIGO

back view

up to size 38!

G. HIGH-WAIST SKINNY JEANS 2549-37464-0645

Cotton/Polyester/Rayon/Spandex Denim.

10-38 \$73.90 \$39.90\*

HIGH-WAIST SKINNY

H. LIGHT STONEWASH



up to size 38!

DARK STONEWASH

LIGHT STONEWASH

H. STRAIGHT STRETCH JEANS 2549-24861-0645

Cotton/Polyester/Spandex Denim.

10-38 \$79.90 \$49.90\*

STRETCH STRAIGHT

J. DARK STONEWASH



up to size 38!

DARK STONEWASH

LIGHT STONEWASH

J. BOOTCUT STRETCH JEANS 2549-24867-0645

Cotton/Polyester/Spandex Denim.

10-38 \$79.90 \$49.90\*

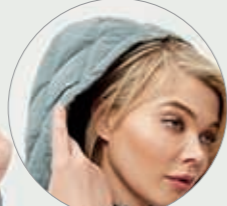
STRETCH BOOTCUT

New Color!

A. DUSTY PINE

# multi-season JACKETS

Versatile outerwear that delivers so much more than style.



Drawstring hood



Snap side slits

two-way zipper



A.

DUSTY PINE

NIGHT BLUE

NEW! TAUPE GREY

Leather Chelsea Bootie Pg. 38



B. NAVY



B. NAVY

knit lining

side zippers

rounded hem

SAVE \$65

B.

NAVY



up to size 38!

high/low drawstring hem

SAVE UP TO \$57



C. MEDIUM STONEWASH  
DARK BLUE STONEWASH MEDIUM STONEWASH



D. HOT RED NAVY



E. GREEN DUSK



E. NEW! GREEN DUSK

E. NEW! GREEN DUSK

snaps at side slits

A. LONG QUILTED HOODED JACKET  
2529-42279-0645  
Polyester.  
10/12-34/36 \$159.90 \$89.90\*

B. QUILTED ZIP JACKET  
2529-13365-0645 Polyester.  
10-36 \$157.90 \$92.90\*

C. HOODED ANORAK  
2529-05694-0645  
Cotton/Denim.  
10-38 \$146.90 \$89.90\*

D. HOODED RAINCOAT  
2520-05739-0645  
Cotton/Nylon.  
10-34 \$146.90 \$89.90\*

E. NEW! QUILTED SNAP FRONT JACKET  
2529-04865-0645 Polyester.  
10/12-34/36 \$129.90 \$84.90\*  
All machine washable, imported.  
\*Red prices reflect discount.

UP TO  
**40% off**  
Everything!

New Color!



A.  
BLACK

cuddle up in  
**SOFT SHERPA**

Cozy layers for cool summer nights and fresh fall days.

FROM  
**64<sup>90</sup>**

side zip pockets

Boyfriend Jean  
Pg. 72



BLACK



NEW! DESERT GREEN



DEEP OLIVE PLAID



HEATHER GREY BLUE PLAID

SAVE UP TO  
**\$50**

B.  
DEEP OLIVE PLAID



side pockets

oversized pockets

Leather Chelsea Bootie  
Pg. 38



cuddly sherpa

IVORY

Bootcut Leggings



BLACK

HEATHER CHARCOAL

NAVY

DEEP OLIVE

side pockets

up to size 38/40!

Legging NOW  
**24<sup>90</sup>**

C.  
IVORY  
D.  
BLACK

**A. ZIP FRONT HOODED SHERPA JACKET**  
2529-17537-0645  
Polyester Sherpa.  
10/12-34/36 ~~\$94.90~~ **\$64.90\***

**B. WOOL BLEND LONG SHIRT JACKET**  
2532-42290-0645  
Wool/Other Fibers.  
10/12-34/36 ~~\$146.90~~ **\$96.90\***

**C. SHERPA ZIP-FRONT JACKET**  
2529-42736-0645  
Polyester Sherpa.  
10/12-34/36 ~~\$95.90~~ **\$64.90\***

**D. KNIT BOOTCUT LEGGINGS**  
2525-15551-0645  
Cotton/Spandex Jersey.  
10/12-38/40 ~~\$39.90~~ **\$24.90\***

All machine washable, imported. \*Red prices reflect discount.



A. IVORY

*sweater*  
**DAYS**  
*Sporty styles with  
 an upscale look.*  
**SAVE UP TO**  
**\$30**



\*Red prices reflect discount.  
 All machine washable, imported.

**NOW**  
**39<sup>90</sup>**

*tunic length*



B. BLACK



D. PEONY PETAL



D. BLACK  
 PEONY PETAL  
 BROWN SUGAR  
 BOYSENBERRY



B. BLACK  
 HEATHER GREY  
 VINTAGE NAVY



C. DUSTY PINK MARLED

A. SIDE STRIPE  
 MOCKNECK  
 SWEATER  
**2556-20546-0645**  
 Cotton/Acrylic.  
 10/12-34/36  
**\$73.90 \$43.90\***

B. AUDREY  
 TURTLENECK  
 SWEATER  
**2556-28422-0645**  
 Cotton/Rayon/Nylon.  
 10/12-34/36  
**\$62.90 \$39.90\***

C. POINTELLE  
 YOKE PULLOVER  
 SWEATER  
**2556-44563-0645**  
 Acrylic.  
 10/12-34/36  
**\$84.90 \$54.90\***

D. V-NECK  
 SWEATER TUNIC  
**2556-24711-0645**  
 Rayon/Nylon/Cotton/  
 Wool.  
 10/12-34/36  
**\$67.90 \$42.90\***

E. PULLOVER  
 HEAVY KNIT  
**2556-37466-0645**  
 Cotton/Acrylic.  
 10/12-38/40  
**\$73.90 \$43.90\***

F. LOVE ELLOS  
 SWEATER  
**2556-17626-0645**  
 Acrylic/Nylon/  
 Cotton/Wool/Other  
 Fibers.  
 10/12-38/40  
**\$79.90 \$49.90\***



C. DUSTY PINK MARLED

*pointelle yoke & sleeves*

*blouson sleeves*



E. OATMEAL



E. GUNMETAL  
 OATMEAL  
 ROSE MIST  
 ANTIQUE MINT



*up to size 38/40!*

F. BLACK GREY



F. BLACK GREY  
 DUSTY CORNFLOWER SILVER  
 RICH BURGUNDY OYSTER GREY

A.



PURPLE IVORY PLAID

DUSTY PINK PLAID

NAVY PLAID

ROSE BLUSH PLAID

DEEP EMERALD PLAID

EXOTIC PEACOCK PLAID

BLACK WHITE PLAID

A. PLAID  
FLANNEL SHIRT  
2530-37487-0645  
Cotton Woven Flannel.  
10/12-38/40  
\$56.90 \$34.90\*



A.  
DUSTY  
PINK  
PLAID

### The Ellos *experience*

#### The Flannel Shirt

Cotton flannel, brushed to a cuddly soft feel. It's a classic look, especially with our soft-washed Boyfriend Jean (pg. 72).



B.  
EVENING  
BLUE  
A.  
DEEP  
EMERALD  
PLAID

Open Cardis  
NOW  
39.90



B.

HEATHER  
GREY

DUSTY  
PINK

DUSTY  
PURPLE

RASPBERRY

PECAN  
BROWN

DARK OLIVE  
GREEN

HEATHER  
CHARCOAL

EVENING  
BLUE

BLACK

Boyfriend  
Jean  
Pg. 72 →

B. OPEN FRONT  
WAFFLE CARDIGAN  
2556-37560-0645  
Acrylic Twist.  
10/12-42/44  
\$73.90 \$39.90\*

Elevate your everyday with  
**FLANNEL** NOW **34.90**

All machine washable, imported. \*Red prices reflect discount.

A. BUTTER

CORNFLOWER BLUE

HEATHER GREY

PINK SHERBET

SEAMIST

BROWN SUGAR

RED APPLE

BLUEBERRY

MIDNIGHT BERRY

DEEP OLIVE

NAVY

HAZELNUT BROWN

EMERALD GREEN

BLACK

# The Boyfriend CARDI

Our super popular cardigan comes in an array of collectible colors.

NOW **34<sup>90</sup>**



"Can't say enough about the magic of the boyfriend cardigan. I'd love one in every color!"

— FAN OF ELLOS

Chino Pants → Pg. 85



A. HEATHER GREY

now up to size 42/44!

A. BOYFRIEND CARDIGAN  
2556-37494-0645  
Cotton.  
10/12-42/44  
\$62.90 **\$34.90\***

B.

NAVY

EMERALD GREEN



PINK SHERBET

BLACK

B. EVERYDAY CARDIGAN  
2556-37542-0645  
Cotton.  
10/12-38/40  
\$56.90 **\$32.90\***

C. BOXY CARDIGAN  
2556-12555-0645  
Rayon/Polyester.  
10/12-38/40  
\$67.90 **\$39.90\***

\*Red prices reflect discount.  
All machine washable, imported.

UP TO **40% off** Everything!

C. BLACK

BUTTER

BROWN SUGAR HEATHER



SWEET LILAC

RASPBERRY SORBET

NEW! GREY SPRUCE



B. PINK SHERBET



Cardis FROM **32<sup>90</sup>**

now up to size 38/40!

pockets

C. BUTTER

up to size 38/40!

New Color!





A. LIGHT BLUE STONEWASH  
K. WHITE  
B. DARK BASIL



UP TO  
**40% off**  
Everything!

A. CLASSIC DENIM JACKET  
2532-24826-0645  
Cotton/Spandex/  
Polyester Denim.  
See colors, page 87.  
10-38 ~~\$96.90~~ \$59.90\*

B. CHINO CARGO CAPRIS  
2549-37467-0645  
Cotton/Spandex  
Poplin.  
10-38 ~~\$75.90~~ \$39.90\*

C. CROCHET TRIM TUNIC  
2507-37489-0645  
Cotton/Modal Jersey.  
10/12-42/44  
~~\$53.90~~ \$32.90\*

D. CHINO CONVERTIBLE CARGO SHORTS  
2549-24853-0645  
Cotton/Spandex  
Poplin.  
10-34 ~~\$62.90~~ \$36.90\*

E. CHINO SKORT  
2549-37549-0645  
Cotton/Spandex  
Twill.  
10-34 ~~\$62.90~~ \$36.90\*  
All machine washable,  
imported.  
\*Red prices reflect  
discount.



Cargo Capris



Convertible Cargo Shorts



C. WHITE  
D. NAVY

now up to size 42/44!



A. MEDIUM STONEWASH  
E. STONE

attached knit shorts



Chino Skort



up to size 38/40!

button trim

F. STRIPED BUTTON SLEEVE TEE  
2507-13581-0645  
Rayon/Polyester Jersey.  
10/12-38/40 ~~\$56.90~~ \$32.90\*

G. MODERN STRETCH CHINO  
2549-24748-0645  
Cotton/Spandex Twill.  
10-38 ~~\$73.90~~ \$44.90\*



Chino Modern

Tees FROM 17.90

H. V-NECK TEE  
2507-20109-0645  
Cotton Slub Jersey.  
10/12-38/40 ~~\$28.90~~ \$17.90\*

J. CHINO SHORTS  
2549-43207-0645  
Cotton/Spandex Twill.  
Inseam 6".  
10-34 ~~\$56.90~~ \$32.90\*

L. CHINO BERMUDA SHORTS  
2549-21766-0645  
Cotton/Spandex Twill.  
Inseam 11".  
10-34 ~~\$67.90~~ \$36.90\*

Stretch Chino Shorts

Stretch Chino Bermuda



Shorts FROM 32.90



up to size 38/40!

H. CHILI RED/WHITE STRIPE  
J. NEW KHAKI

K. WHITE  
L. DEEP OLIVE



New Print!



New Print!

A. NEW! BLUE PLAID  
B. BLACK WASH



A. ROYAL COBALT STRIPE

# Elevate your every day with the BREEZY HENLEY TUNIC

ONLY 29<sup>90</sup>

3-button neckline

Roll tab sleeves

Pure cambric cotton, pure comfort. 4 seasons. 11 colors.

Over 125,000 sold

A.



## The Ellos experience

### Breezy Cotton Henley Tunic

Light and breathable with classic button neckline. Pair it with jeans, leggings, your favorite work trousers. It's comfortable everywhere.

### Boyfriend Jeans



C.



up to size 38!

D.



Pants NOW 29<sup>90</sup>

C. MEDIUM STONEWASH  
D. NAVY WHITE DOT



elastic waist

- A. BREEZY COTTON HENLEY TUNIC**  
2530-37553-0645  
Cotton Cambric Woven.  
10/12-42/44 ~~\$51.90~~ \$29.90\*
- B. BOYFRIEND JEANS**  
2549-37522-0645  
Cotton/Spandex Denim.  
10-38  
Distressed: ~~\$79.90~~ \$31.90\*  
Washes: ~~\$79.90~~ \$49.90\*
- C. CLASSIC DENIM JACKET**  
2532-24826-0645  
Cotton/Spandex/  
Polyester/ Denim.  
10-38 ~~\$96.90~~ \$39.90\*
- D. WOVEN SOFT PANTS**  
2549-13706-0645  
Rayon Woven.  
10/12-42/44 ~~\$51.90~~ \$29.90\*
- E. TIERED FLORAL 3/4 SLEEVE TUNIC**  
2530-13688-0645  
Cotton Cambric.  
10/12-42/44 ~~\$56.90~~ \$34.90\*
- F. RUFFLE TRIM PEASANT BLOUSE**  
2530-13668-0645  
Cotton Cambric.  
10/12-42/44 ~~\$51.90~~ \$24.90\*

\*Red prices reflect discount.  
All machine washable, imported.

E. WHITE NAVY PRINT



E.



F. DARK SAPPHIRE WHITE PRINT



NOW 24<sup>90</sup>

F.





BLACK



WHITE



FRENCH BLUE



B. INDIGO



MEDIUM STONEWASH



NEW WHITE

A. WHITE  
B. INDIGO

UP TO  
**40% off**  
Everything!

# the shape of DENIM

Trending now, wide-leg jeans with a fabulous fit.

NOW  
**\$39.90**

A. BOATNECK TEE WITH 3/4 SLEEVES  
2507-35966-0645  
Cotton/Spandex Jersey.  
10/12-38/40  
~~\$54.90~~ **\$19.90\***

B. WIDE-LEG CROP JEANS  
2549-17351-0645  
Cotton Denim.  
10-38 ~~\$67.90~~ **\$39.90\***

All machine washable, imported.  
*\*Red prices reflect discount.*



up to size 38/40!

Tee NOW **\$19.90**

up to size 38!

LOVE Sneaker Pg. 38



C. NAVY WHITE FLORAL

up to size 38/40!

Tees FROM **\$24.90**



D. SEAMIST

up to size 38/40!



C. NAVY WHITE FLORAL



DUSTY PINK FLORAL



D. BLACK



LAVENDER MIST



WHITE



SEAMIST



PINK FROST

C. FLUTTER SLEEVE TEE  
2507-17479-0645  
Rayon Jersey.  
10/12-38/40  
~~\$44.90~~ **\$29.90\***

D. CROCHET TRIM TEE  
2507-21917-0645  
Cotton/Rayon Slub Jersey.  
10/12-38/40  
~~\$42.90~~ **\$24.90\***

E. OVERSIZED BUTTON-FRONT DENIM SHIRT  
2530-33079-0645  
Cotton Denim.  
10/12-38/40  
~~\$73.90~~ **\$44.90\***

F. RIBBED WIDE LEG KNIT PANTS  
2525-23558-0645  
Polyester/Rayon/Spandex.  
10/12-34/36 ~~\$56.90~~ **\$34.90\***



New Color!

E. MEDIUM STONEWASH  
F. BLACK

ribbed knit



E. oversized pockets



LIGHT STONEWASH



MEDIUM STONEWASH



NEW! STONEWASH



F. BLACK



HEATHER CHARCOAL

rounded hem



A.

FLORAL PRINT

BLACK

NAVY ANCHOR

GREY SPRUCE DITSY FLORAL

TROPICAL RASPBERRY FLORAL

BLACK WHITE DITSY FLORAL

BLUERED DITSY

NAVY WHITE DITSY

FOREST JADE WHITE DITSY FLORAL

WHITE ANIMAL FLORAL

WHITE

BLACK MULTI FLORAL

# Cute TEES

Just add denim!

## FROM 19<sup>90</sup>

**A. TRAPEZE KNIT TEE**  
 2507-42908-0645  
 Cotton Slub Jersey.  
 10/12-38/40  
 \$34.90 \$21.90\*

A. GREY SPRUCE DITSY FLORAL

up to size 38/40!



Back pleat

Boyfriend Jean Pg. 87



B. MAUVE ORCHID HEATHER GREY up to size 42/44!



B. HEATHER GREY BLACK  
 ULTRAMARINE GREEN HEATHER GREY  
 MAROON RED HEATHER GREY

COOL LILAC HEATHER GREY  
 MAUVE ORCHID HEATHER GREY  
 HEATHER GREY OCEAN SAPPHIRE



D. DARK CHARCOAL HEART up to size 38/40!

NOW 21<sup>90</sup>

### The Ellos experience

**Cotton Knit Tees**  
 There's something a little "extra" about Ellos tees: the soft cotton, the flattering fits, the details that make them unique.



C. BLUE PAISLEY PRINT  
 PRIMROSE YELLOW FLORAL  
 WHITE GREEN PRINT

BLACK  
 WHITE  
 LIGHT PEACH FLORAL



up to size 38/40!

C. BLUE PAISLEY PRINT

D. sequin design motifs tees



screenprint graphic tees



embroidered design



**B. COLORBLOCK 3/4 SLEEVE TEE**  
 2507-37457-0645  
 Cotton/Rayon Jersey.  
 10/12-42/44 \$34.90 \$19.90\*

**C. TWISTED V-NECK TEE**  
 2507-37510-0645  
 Cotton Jersey. 10/12-38/40  
 Solid: \$34.90 \$19.90\*  
 Print: \$39.90 \$24.90\*

\*Red prices reflect discount.  
 All machine washable, imported.

**D. GRAPHIC SCOOP NECK TEE**  
 2507-34603-0645  
 Cotton Slub Jersey.  
 10/12-38/40 \$37.90 \$21.90\*

A. NEW!  
MULTI  
FLORAL



MULTI FLORAL

B. NEW!  
RASPBERRY  
SORBET



RASPBERRY SORBET

KELLY



PRIMROSE  
YELLOW FLORAL

MIDNIGHT BERRY  
FLORAL

D. GREEN  
MULTI  
FERN



New Print!

NOW  
29.90



GREEN  
MULTIFERN

BLACK  
CAMEL LEAF

NEW! GOLDEN  
MAIZE FLORAL



BLACK  
FLORAL PRINT



BLACK WHITE  
PRINT



NAVY  
GRAPHIC PRINT



NEW! VINTAGE  
CORAL FLORAL

MAROON RED  
GRAPHIC PRINT

F. KELLY  
GREEN  
FLORAL



KELLY GREEN  
FLORAL



BRIGHT COBALT  
DITSY

A. NEW! V-NECK  
PLEATED BODICE  
TUNIC

2507-06584-0645

Polyester Spandex.

10/12-34/36

\$62.90 \$39.90\*

B. NEW! V-NECK CAP  
SLEEVE TEE WITH  
INVERTED PLEAT

2507-04846-0645

Rayon/Polyester Jersey.

10/12-34/36

\$59.90 \$21.90\*

C. SMOCKED TUNIC

2507-14171-0645

Rayon/Spandex Jersey.

10/12-34/36

\$56.90 \$34.90\*

# trending TUNICS

Take your pick of pretty details  
and fashionable fits.

FROM 21.90



C. PRIMROSE  
YELLOW FLORAL

smocking



E. NAVY  
GRAPHIC  
PRINT



New Print!

up  
to size  
38/40!

D. V-NECK TUNIC WITH  
FRONT PLEAT

2507-05564-0645

Rayon/Spandex Jersey.

10/12-34/36 \$52.90 \$29.90\*

E. BELL SLEEVE  
A-LINE TUNIC

2507-13522-0645

Rayon Jersey.

10/12-38/40 \$56.90 \$34.90\*

F. THREE-QUARTER  
SLEEVE CURVED  
HEM TUNIC

2507-13271-0645

Rayon/Spandex Jersey Knit.

10/12-38/40

\$55.90 \$34.90\*

\*Red prices reflect  
discount.

All machine washable,  
imported.



**A.**  
NEW!  
OCEAN  
SAPPHIRE

**B.**  
AQUA  
SKY



**C.**  
SOFT  
CARMEL

**D.**  
DEEP  
OLIVE

UP TO  
**40% off**  
Everything!

# COOL SWEATS

Soft to the touch – sweatshirts and hoodies in a flattering tunic length.

FROM **34.90**

- A. ZIP-FRONT HOODIE WITH ZIP POCKETS**  
2532-33089-0645  
Cotton/Polyester Baby French Terry.  
10/12-38/40 ~~\$79.90~~ **\$46.90\***
- B. HOODED SWEATSHIRT TUNIC**  
2507-26225-0645  
Cotton/Polyester Fleece.  
10/12-38/40 ~~\$73.90~~ **\$46.90\***
- C. ZIP-POCKET SWEATSHIRT**  
2507-18057-0645  
Cotton/Polyester Baby French Terry.  
10/12-42/44 ~~\$56.90~~ **\$34.90\***
- D. FRENCH TERRY TUNIC DRESS**  
2507-37512-0645  
Cotton/Polyester Baby French Terry.  
10/12-42/44 ~~\$56.90~~ **\$34.90\***
- E. FRENCH TERRY ZIP POCKET TUNIC**  
2507-37505-0645  
Cotton/Polyester Baby French Terry.  
10/12-42/44 ~~\$56.90~~ **\$34.90\***



**E.**  
BLACK  
WILD  
PLUM  
RADIANT  
RED  
NAVY  
DARK  
BASIL  
HEATHER  
CHARCOAL  
HEATHER  
GREY  
ROYAL  
COBALT  
FOREST  
JADE

A.



**A. HOODED SWEATSHIRT DRESS**

2505-35950-0645  
Cotton/Polyester  
French Terry.  
10/12-34/36  
~~\$62.90~~ **\$39.90\***



A. SOFT BEIGE

New Color!

A. NEW! GREY SPRUCE



*the new look of*  
**COMFORT**  
A dress that's a sweatshirt  
a sweatshirt that's a dress.  
**NOW 39<sup>90</sup>**

**B. HOODED FLEECE SWEATSHIRT**

2507-23654-0645  
Cotton/Polyester Fleece.  
10/12-38/40 ~~\$56.90~~ **\$32.90\***

**C. NEW! DRAWSTRING WAIST WIDE LEG FLEECE SWEATPANTS**

2525-06594-0645  
Cotton/Polyester Fleece.  
10/12-34/36 ~~\$54.90~~ **\$39.90\***

**D. BOXY FLEECE SWEATSHIRT**

2507-23617-0645  
Cotton/Polyester Fleece.  
10/12-38/40 ~~\$51.90~~ **\$32.90\***

**E. DRAWSTRING WAIST FLEECE SWEATPANTS**

2525-23613-0645  
Cotton/Polyester Fleece.  
10/12-38/40 ~~\$51.90~~ **\$32.90\***

\*Red prices reflect discount.  
All machine washable, imported.

B.



AQUA SKY HEATHER GREY MISTY ROSE

B. AQUA SKY  
C. NEW! AQUA SKY

up to size 38/40!

C.



AQUA SKY MISTY ROSE

D.



MISTY ROSE HEATHER GREY AQUA SKY BURNT OLIVE



"Love the coziness of this sweatshirt top – got the pants as well to complete the outfit!"

— FAN OF ELLOS

E.



MISTY ROSE HEATHER GREY AQUA SKY BURNT OLIVE

Sweats FROM **32<sup>90</sup>**

D., E. MISTY ROSE





*the new*  
**SOFT WEAR**

Our color-drenched, super soft French terry bestsellers to mix and match.

FROM **26<sup>90</sup>**



“EVERYBODY...  
even strangers, ask me where I got it.  
It's very convenient, nice big pockets!”

— FAN OF ELLOS



**A. LONG ZIP- FRONT HOODIE**

**2532-37484-0645**  
Cotton/Polyester Baby French Terry.  
10/12-42/44  
~~\$67.90~~ **\$39.90\***

**B. FRENCH TERRY DRAWSTRING SWEATPANTS**

**2525-37516-0645**  
Cotton/Polyester Baby French Terry.  
10/12-42/44  
~~\$45.90~~ **\$26.90\***

**C. WIDE LEG FRENCH TERRY SWEATPANT**

**2525-42266-0645**  
Cotton/Polyester Baby French Terry.  
10/12-34/36  
~~\$49.90~~ **\$32.90\***

**D. LOVE ELLOS TEE**

**2507-15315-0645**  
Cotton Slub Jersey.  
10/12-42/44  
~~\$37.90~~ **\$19.90\***

All machine washable, imported.

\*Red prices reflect discount.



*the* **ellos** TEE



“These tees are my favorite! So soft and comfortable, they wash well, and look great!”

— FAN OF ELLOS

A. BLACK



**A. OVERSIZED TUNIC**  
 2507-39777-0645  
 Rayon Jersey.  
 10/12-42/44  
 Solid: ~~\$39.90~~ **\$24.90\***  
 Print: ~~\$45.90~~ **\$29.90\***

**B. V-NECK A-LINE TUNIC**  
 2507-13312-0645  
 Cotton/Rayon/  
 Spandex Jersey.  
 10/12-42/44  
~~\$39.90~~ **\$24.90\***

**C. V-NECK A-LINE TUNIC**  
 2507-09703-0645  
 Cotton/Rayon/  
 Spandex Jersey.  
 10/12-38/40  
~~\$39.90~~ **\$24.90\***

**D. KNIT BOOTCUT LEGGINGS**  
 2525-13551-0645  
 Cotton/Spandex Jersey.  
 10/12-38/40  
~~\$39.90~~ **\$24.90\***

\*Red prices reflect discount.  
 All machine washable,  
 imported.

A. **NEW!**  
 NAVY  
 ABSTRACT  
 DOT



New Print!

up  
to size  
42/44!



# TUNIC

upgrade

Everyday tunics are truly versatile – simply change your accessories for party time!

FROM **24<sup>90</sup>**

Slingback  
Flat  
Pg. 38

B. CHILI  
 RED

New Color!

up  
to size  
42/44!

pocket

Bike  
Shorts  
Pg. 103



C. NAVY

up  
to size  
38/40!



UP TO  
**40% off**  
Everything!

B. WHITE  
 D. DEEP OLIVE



up to  
size  
38/40!

NOW  
**24<sup>90</sup>**

- A. SWEATSHIRT TUNIC WITH SHIRTTAIL HEM**  
2507-35969-0645  
Cotton/Polyster Baby French Terry.  
10/12-38/40  
~~\$56.90~~ **\$34.90\***
- B. LOVE TUNIC SWEATSHIRT**  
2507-04596-0645  
Cotton French Terry.  
10/12-42/44  
~~\$56.90~~ **\$32.90\***
- C. STRETCH KNIT BIKE SHORTS**  
2525-09955-0645  
Cotton/Spandex Jersey.  
Inseam 8". 10/12-42/44  
Solid/Heather:  
~~\$28.90~~ **\$13.90\***  
Print: ~~\$54.90~~ **\$18.90\***  
Black Ivory Snake, Black White Print, Camouflage:  
~~\$54.90~~ **\$13.90\***
- D. STRETCH CAPRI LEGGINGS**  
2525-43183-0645  
Cotton/Spandex Jersey.  
10/12-42/44  
Solid/Heather:  
~~\$51.90~~ **\$15.90\***  
Print: ~~\$57.90~~ **\$20.90\***  
Black Reptile, Camouflage, Plaid, Animal Heather:  
~~\$54.90~~ **\$15.90\***
- E. STRETCH KNIT LEGGINGS**  
2525-37498-0645  
Cotton/Spandex Jersey.  
10/12-42/44  
Solid/Heather:  
~~\$54.90~~ **\$17.90\***  
Print: ~~\$59.90~~ **\$22.90\***  
Black Reptile, Animal Heather, Black White Print:  
~~\$59.90~~ **\$17.90\***

A. HEATHER GREY  
D. NAVY  
up to size 38/40!

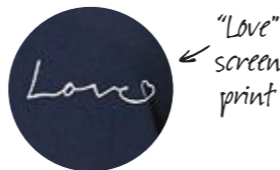


B. MISTY ROSE  
E. GREY  
BLACK PRINT

Sweatshirts FROM **32<sup>90</sup>**

up to size 42/44!

LOVE Sneaker Pg. 38



## Bike Short FROM 13<sup>90</sup>



## Capri FROM 15<sup>90</sup>



## Legging FROM 17<sup>90</sup>



next level **LEGGINGS**  
Full length, capri and bike shorts in solids & prints, up to size 42/44.  
FROM **13<sup>90</sup>**

All machine washable, imported.  
\*Red prices reflect discount.

- A. SWEATSHIRT TUNIC WITH SHIRTTAIL HEM**  
2507-35969-0645  
Cotton/Polyester Baby French Terry.  
10/12-38/40  
~~\$56.90~~ **\$34.90\***
- B. LOVE TUNIC SWEATSHIRT**  
2507-04596-0645  
Cotton French Terry.  
10/12-42/44  
~~\$56.90~~ **\$32.90\***
- C. STRETCH KNIT BIKE SHORTS**  
2525-09955-0645  
Cotton/Spandex Jersey.  
Inseam 8". 10/12-42/44  
Solid/Heather:  
~~\$28.90~~ **\$13.90\***  
Print: ~~\$34.90~~ **\$18.90\***  
Black Ivory Snake, Black White Print, Camouflage:  
~~\$34.90~~ **\$13.90\***
- D. STRETCH CAPRI LEGGINGS**  
2525-43183-0645  
Cotton/Spandex Jersey.  
10/12-42/44  
Solid/Heather:  
~~\$31.90~~ **\$15.90\***  
Print: ~~\$37.90~~ **\$20.90\***  
Black Reptile, Camouflage, Plaid, Animal Heather:  
~~\$34.90~~ **\$15.90\***
- E. STRETCH KNIT LEGGINGS**  
2525-37498-0645  
Cotton/Spandex Jersey.  
10/12-42/44  
Solid/Heather:  
~~\$34.90~~ **\$17.90\***  
Print: ~~\$39.90~~ **\$22.90\***  
Black Reptile, Animal Heather, Black White  
Print: ~~\$39.90~~ **\$17.90\***

A. HEATHER GREY  
D. NAVY  
up to size 38/40!

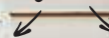


B. MISTY ROSE  
E. GREY BLACK PRINT

Sweatshirts FROM **32<sup>90</sup>**

up to size 42/44!

LOVE Sneaker Pg. 38



C. WHITE

All machine washable, imported.  
\*Red prices reflect discount.



D. BLACK MULTI FLORAL PRINT



E. BLACK/WHITE CAMOUFLAGE

## Bike Short FROM 13<sup>90</sup>



## Capri FROM 15<sup>90</sup>



## Legging FROM 17<sup>90</sup>



next level **LEGGINGS**  
Full length, capri and bike shorts in solids & prints, up to size 42/44.  
FROM **13<sup>90</sup>**

Use code ELCQP20 to take 20% off of your highest priced item of in stock merchandise. Discounted item will be the highest price item with 2+ items and does not apply to multiple units of the same item. Does not apply to clearance, final sale, menswear, home goods, Jessica London leather, Eloqui, Catherine's Perfect Price Collection, CUUP, June & Vie, select swimwear, select accessories, and select third party merchandise. Additional exclusions may apply. Not applicable to gift cards or prior purchases. May not be redeemed for cash or combined with other offers. Returns will be credited at the discounted price. All items marked as final sale cannot be returned or exchanged. Only applies to in stock merchandise. All promotions and savings are stated in USD. Expires 10/29/2024.

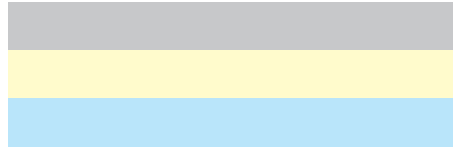
# ellos®

a FULLBEAUTY brand™

2300 SOUTHEASTERN AVENUE, INDIANAPOLIS, IN 46283  
ELLOS.US OR 1.800.405.3650

PLEASE USE CODE IN BLUE BOX WHEN ORDERING  
PRICES IN THIS CATALOG IN EFFECT UNTIL 11/19/24 QP 240805

PRSR STD  
U.S. POSTAGE  
PAID  
ELLOS



# UP TO 40% OFF EVERYTHING



**The Ellos**  
*experience*

### Knit Maxi Dresses

These wardrobe superstars do everything. From casual to dress-up, you can accessorize them for every event on your calendar.

#### A. TANK KNIT MAXI DRESS

2505-08955-0645 Cotton/Spandex Jersey.

10/12-42/44

Solid: ~~\$56.90~~ \$24.90\*

Print: ~~\$62.90~~ \$29.90\*

#### B. 3/4 SLEEVE KNIT MAXI DRESS

2505-38700-0645 Cotton/Spandex Jersey.

10/12-42/44 ~~\$62.90~~ \$29.90\*

\*Red prices reflect discount.

All machine washable, imported.

shop [www.ellos.us](http://www.ellos.us)

MODERN SWEDISH FASHION, SIZES 10-44

[f](#) [i](#) [t](#) [p](#) @ellosusa

# ellos®

a FULLBEAUTY brand™

2300 SOUTHEASTERN AVENUE, INDIANAPOLIS, IN 46283  
ELLOS.US OR 1.800.405.3650

PLEASE USE CODE IN BLUE BOX WHEN ORDERING  
PRICES IN THIS CATALOG IN EFFECT UNTIL 11/19/24 QP 240805

PRSR STD  
U.S. POSTAGE  
PAID  
ELLOS

ELCQP20

# EXTRA 20% OFF

YOUR HIGHEST PRICED ITEM WITH PURCHASE OF 2+ ITEMS

USE CODE: **ELCQP20**

For details, see inside back cover.



A.  
NAVY  
PRINT

B.  
CHILI  
RED

the knit  
**MAXI**  
FROM **24<sup>90</sup>**

## The Ellos experience

### Knit Maxi Dresses

These wardrobe superstars do everything. From casual to dress-up, you can accessorize them for every event on your calendar.

#### A. TANK KNIT MAXI DRESS

2505-08955-0645 Cotton/Spandex Jersey.

10/12-42/44

Solid: ~~\$56.90~~ **\$24.90\***

Print: ~~\$62.90~~ **\$29.90\***

#### B. 3/4 SLEEVE KNIT MAXI DRESS

2505-38700-0645 Cotton/Spandex Jersey.

10/12-42/44 ~~\$62.90~~ **\$29.90\***

*\*Red prices reflect discount.*

*All machine washable, imported.*

shop [www.ellos.us](http://www.ellos.us)

MODERN SWEDISH FASHION, SIZES 10-44

[f](#) [i](#) [t](#) [p](#) @ellosusa